



Measures as a Service (MaaS) by Mathematica and Google: Health Digital Solutions

Measures as a Service: Advancing a Higher Standard of Care

Measures as a Service (MaaS) is a unique cloud-based quality measurement solution to advance your mission to improve standards of care while lowering costs. MaaS leverages the power of real-time FHIR formatted data through its cloud-based measures workbench and a customizable user interface to meet your organization's needs.

Measuring quality in real time

Improve care delivery and patient outcomes by connecting medical history and clinical data across facilities to identify gaps in care, improve patients' overall health, and address delivery deficiencies in real time.

Measuring care delivery and patient outcomes



Track quality measures at the individual patient level



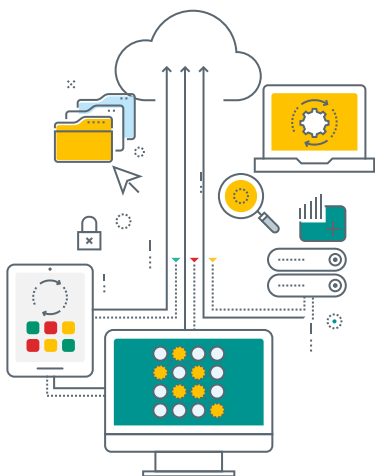
Monitor provider progress toward meeting standards across your system



Improve financial performance

Insights into value-based care that promote action

MaaS enables your organization to take the following steps toward improved patient care:



- / Monitor your health system's progress toward meeting regulatory quality standards longitudinally and in real time by creating custom dashboards and measures
- / Reduce administrative burden for clinicians with normalized clinical and administrative data, quality measures, and analytics
- / Compare performance with internal and national benchmarks
- / Identify gaps in care and act quickly
- / Reduce variation in patient care
- / Improve use of resources
- / Customize measures with Mathematica experts to meet your institutional priorities
- / Leverage Mathematica's artificial intelligence modeling, and predictive and prescriptive analytics
- / Help your system advance and achieve equity measurement with Mathematica's expertise

Let's Progress Together. For more information contact John Stern, JStern@mathematica-mpr.com and Laura Kovach, LKovach@mathematica-mpr.com

About Mathematica

Mathematica is the insight partner that illuminates the path to progress for public- and private-sector change agents. Our health experts apply knowledge at the intersection of data, methods, policy, and practice, translating big questions into deep insights, policy transformation, quality improvement, efficiency, delivery, affordability, equity, and health care financing.

FIND US

Princeton, NJ • Ann Arbor, MI • Cambridge, MA • Chicago, IL • Oakland, CA
Seattle, WA • Tucson, AZ • Woodlawn, MD • Washington, DC | mathematica.org

FOLLOW US

