

# **Background Information on Integration and Medicaid MLTSS Market Trends for Panel Discussion on How States Are Positioning for Integration**

---

**2018 SNP Alliance Fall Leadership Forum  
Washington, DC  
October 18, 2018**

---

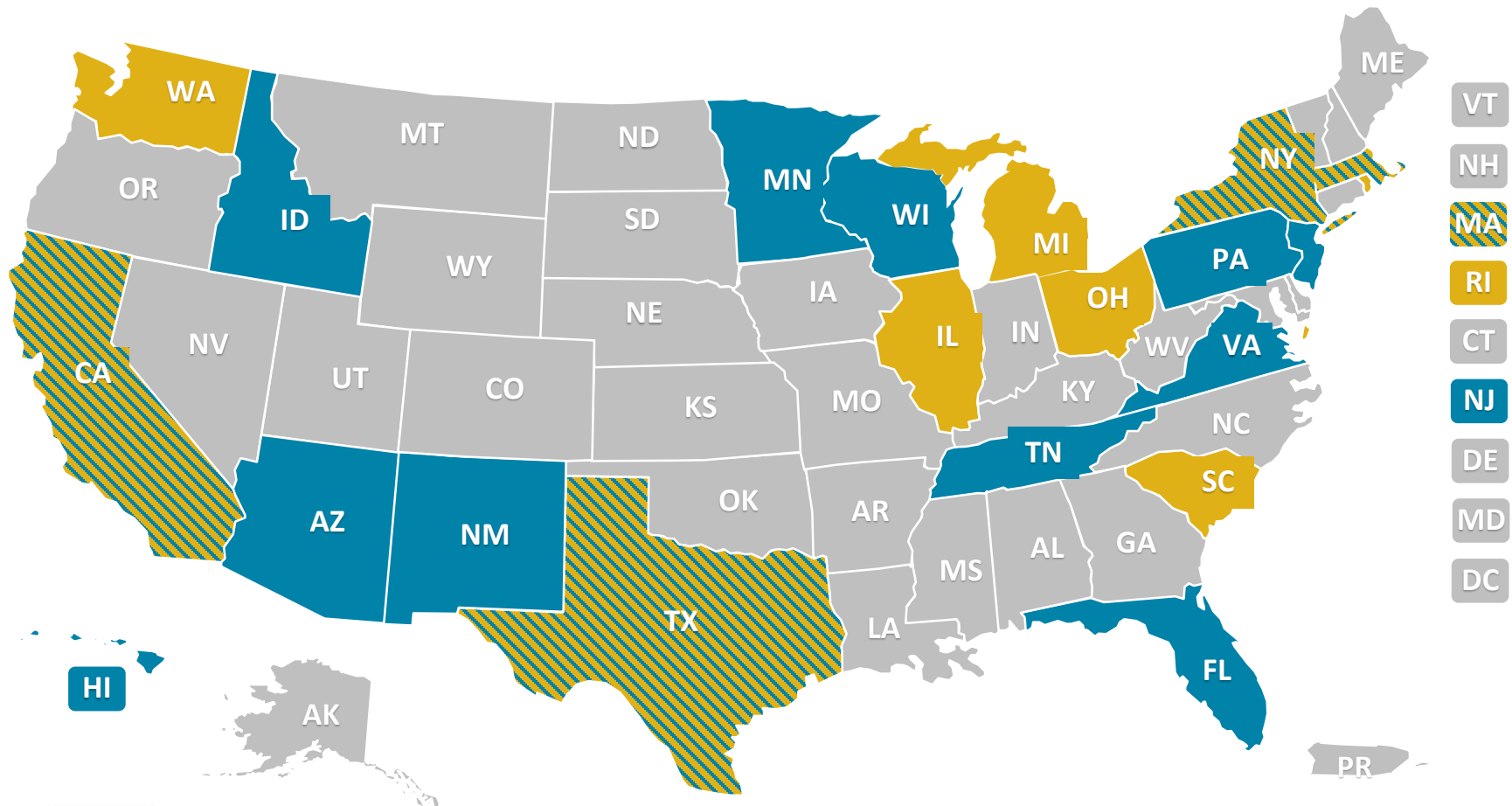
Prepared by Danielle Chelminsky and Jim Verdier  
Mathematica Policy Research and the Integrated Care  
Resource Center

---

---

# **Enrollment in Integrated Care Plans: Current Status and Trends**

# States at the Forefront of Integration in 2018



## KEY



Integrated D-SNP\*  
 Financial Alignment Demonstration  
 Both Financial Alignment Demonstration and Integrated D-SNPs

\* These states have aligned D-SNP/MLTSS plans and/or FIDE SNPs as of mid-2018.

# Growth in Integrated/Coordinated Care Enrollment

Integration/ Coordination Platform	Enrollment		States
	Sept 2011	Sept 2018	
<b>Financial Alignment Initiative Demonstrations</b>	0	377,391	9 states <i>Capitated: CA, IL, MA, MI, NY, OH, RI, SC, TX</i>
<b>All D-SNPs<sup>1</sup></b>	1,127,684	2,340,758	41 states, DC and PR <i>Three quarters of enrollment in 12 states: (FL, NY, PR, TX, PA, CA, TN, AZ, GA, AL, MA, LA)</i>
<b>FIDE SNPs</b>	0	176,727	10 states <i>AZ, CA, FL, ID, MA, MN, NJ, NY, TN, WI</i>
<b>PACE</b>	21,731	43,303	31 states

<sup>1</sup>All D-SNP enrollment includes FIDE SNP enrollment.

Sources: Integrated Care Resource Center. *Monthly Enrollment in Medicare-Medicaid Plans by Plan, March 2011 to September 2018*: [http://www.integratedcareresourcecenter.com/PDFs/MMP\\_Enroll\\_by\\_State\\_March\\_2018.pdf](http://www.integratedcareresourcecenter.com/PDFs/MMP_Enroll_by_State_March_2018.pdf); and Centers for Medicare & Medicaid Services. *SNP Comprehensive Report*, September 2011 and 2018: <https://www.cms.gov/Research-Statistics-Data-and-Systems/Statistics-Trends-and-Reports/MCRAdvPartDENrolData/Special-Needs-Plan-SNP-Data.html>

# Aligned Enrollment in Integrated Plans, 2017-18

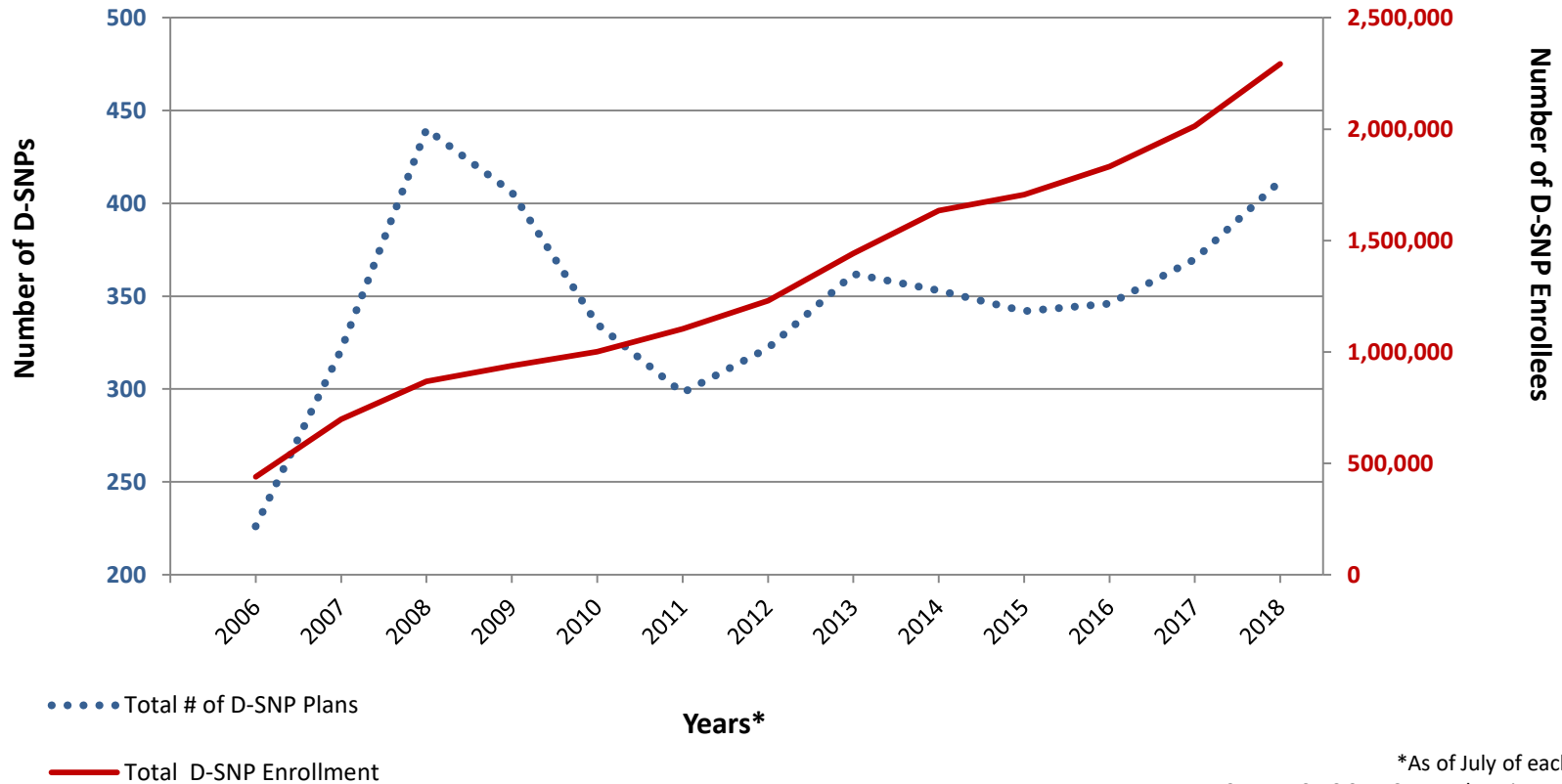
Plan Type	2017/2018 Aligned Enrollment <sup>1</sup>	States
Medicare-Medicaid Plans (MMPs)	377,391	CA, IL, MA, MI, NY, OH, RI, SC, and TX
PACE	43,303	31 states
FIDE SNPs	176,727	AZ, CA, FL, MA, MN, ID, NJ, NY, TN and WI
Aligned Enrollment in Non-FIDE SNP <i>Integrated</i> D-SNP/MLTSS Plans <sup>2</sup>	64,687	CA, MN, TN, and TX
Aligned Enrollment in Non-FIDE SNP <i>Partially Integrated</i> D-SNP/Medicaid Plans <sup>3</sup>	79,178	AZ, HI, and NM

<sup>1</sup>Aligned enrollment refers to the number of dually eligible enrollees who are obtaining both Medicare and Medicaid services from the same plan, or from companion plans operated by the same company in the same geographic area. Enrollment data for MMPs, PACE, and FIDE SNPs are for September 2018.

<sup>2</sup>Enrollment is from July 2017. Data for CA are incomplete because ICRC was not able to obtain data for all integrated plans.

<sup>3</sup>Enrollment is from July 2017. Companion Medicaid plans do not include some Medicaid LTSS and behavioral health services.

# Growth in D-SNPs and Enrollment, 2006-2018



\*As of July of each year  
Source: CMS SNP Comprehensive Reports

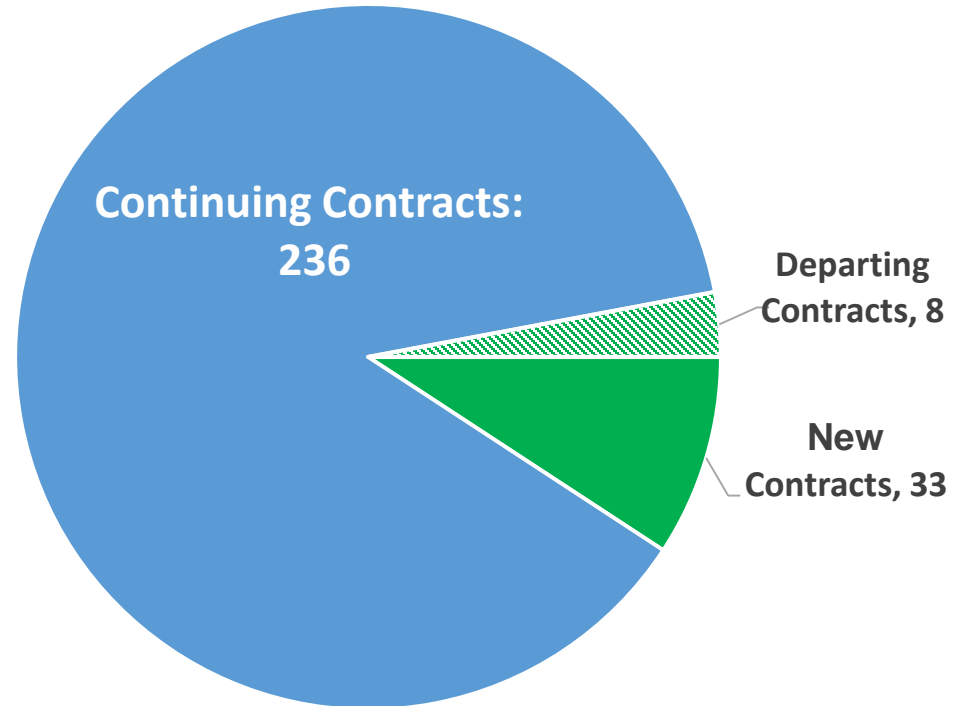
# D-SNP New Entries and Departures From States, CY 2019

## A Preliminary Analysis

CY 2018



CY 2019



**Note:** In the CMS MA system, contracts that include D-SNPs frequently offer plans in multiple states under the same contract number. To highlight the impact on states of new entries and departures, this slide counts these multi-state contracts as a separate contract in each state. A contract that covers four states, for example, is counted as four contracts. For CY 2019, we generally did not count a contract as “New” if the MA organization was already operating a contract in the state in CY 2018, or “Departing” if the organization will continue to operate a contract in the state in CY 2019.

**States with Departing Contracts:** KY, MD, NY, OH, OR, TX, DC

**States with New Contracts:** CT, DE, FL, GA, IN, KS, KY, LA, MD, ME, MI, MO, MS, NC, NM, NY, OH, TX, UT, WV

# D-SNP, FIDE SNP, MMP, and PACE Enrollment by State, Sept 2018

State					Total # of FBDEs <sup>2</sup> (Mar 2017)
	D-SNP <sup>1</sup>	FIDE SNP	MMP	PACE	
AK					16,593
AL	61,724			162	86,692
AR	20,586			253	67,515
AZ	84,945	10,186			160,686
CA	115,487	13,707	115,604	6,099	1,410,140
CO	12,605			3,892	77,541
CT	25,400				75,607
DC	9,394				22,189
DE	3,203			237	13,267
FL	317,639	592		1,770	391,471
GA	72,834				139,749
HI	22,583				34,947
IA	3,630			464	66,047
ID		4,140			27,675
IL			55,189		313,261
IN	12,449			195	91,449
KS	3,142			441	39,419
KY	13,464				95,331
LA	49,310			442	109,065
MA		51,719	20,589	4,411	287,936
MD	6,230			139	86,660
ME	5,561				52,750
MI	19,513		39,244	2,610	258,434
MN	2,261	40,650			122,107
MO	25,225				136,868

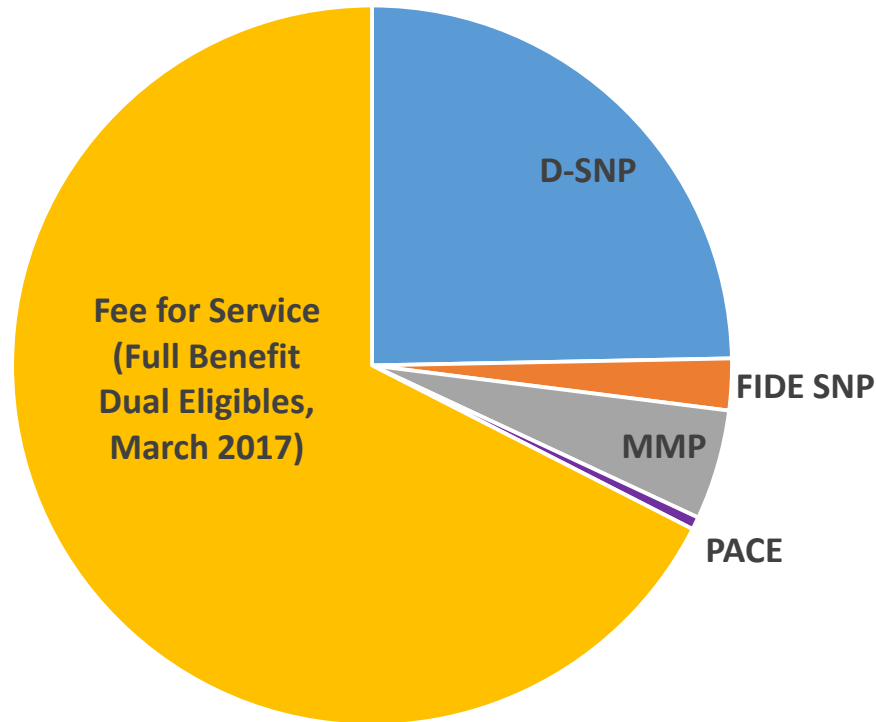


# D-SNP, FIDE SNP, MMP, and PACE Enrollment by State, Sept 2018

State	D-SNP	FIDE SNP	MMP	PACE	Total # of FBDEs
MS	21,258				78,530
MT	583				17,127
NC	42,348			2,011	246,520
ND				169	11,193
NE	3,983			169	35,425
NH					21,365
NJ		39,769		978	188,341
NM	24,946			399	63,011
NV					29,687
NY	274,072	11,543	4,897	5,139	725,984
OH	42,132		75,702	392	263,245
OK	2,410			439	93,862
OR	22,495			1,367	80,767
PA	136,870			6,287	369,620
RI	2,702		13,314	272	33,817
SC	33,337		11,377	437	133,188
SD					12,236
TN	101,332	1,762		269	152,701
TX	184,505		41,475	1,163	383,915
UT	7,854				31,939
VA	22,330			1,377	127,650
VT					19,973
WA	42,662			644	132,958
WI	30,823	2,659		542	144,714
WV	1,185				46,393
WY				134	7,441
<b>TOTAL</b>	<b>1,885,007</b>	<b>176,727</b>	<b>377,391</b>	<b>43,303</b>	<b>7,635,001</b>

# National D-SNP, FIDE SNP, MMP, and PACE Enrollment, Sept 2018

Dual Eligible Enrollment by Plan Type  
Sept 2018



**Notes:** D-SNP total does not include FIDE SNP enrollment and does not include D-SNPs in Puerto Rico.  
D-SNP total includes 12 enrollees in plans with under 11 enrollees.  
D-SNP enrollment may include partial benefit dual eligibles.

**Sources:** CMS Monthly Enrollment by Contract, Sept 2018: <https://www.cms.gov/Research-Statistics-Data-and-Systems/Statistics-Trends-and-Reports/MCRAdvPartDEnrolData/Monthly-Enrollment-by-Contract.html>

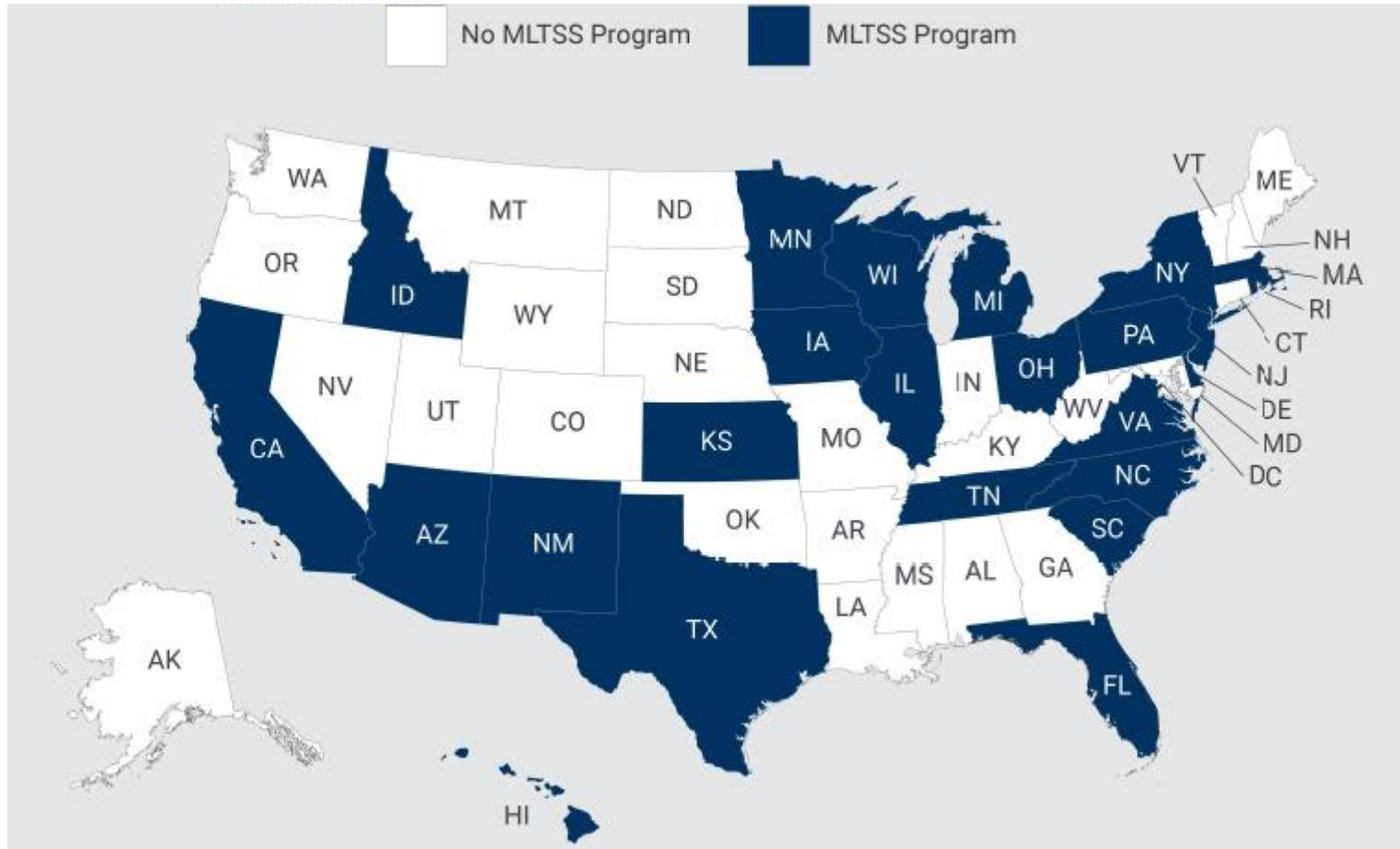
CMS SNP Comprehensive Report, Sept 2018: <https://www.cms.gov/Research-Statistics-Data-and-Systems/Statistics-Trends-and-Reports/MCRAdvPartDEnrolData/Special-Needs-Plan-SNP-Data.html>

CMS Quarterly Enrollment Updates, March 2017: <https://www.cms.gov/Medicare-Medicaid-Coordination/Medicare-and-Medicaid-Coordination/Medicare-Medicaid-Coordination-Office/Analytics.html>

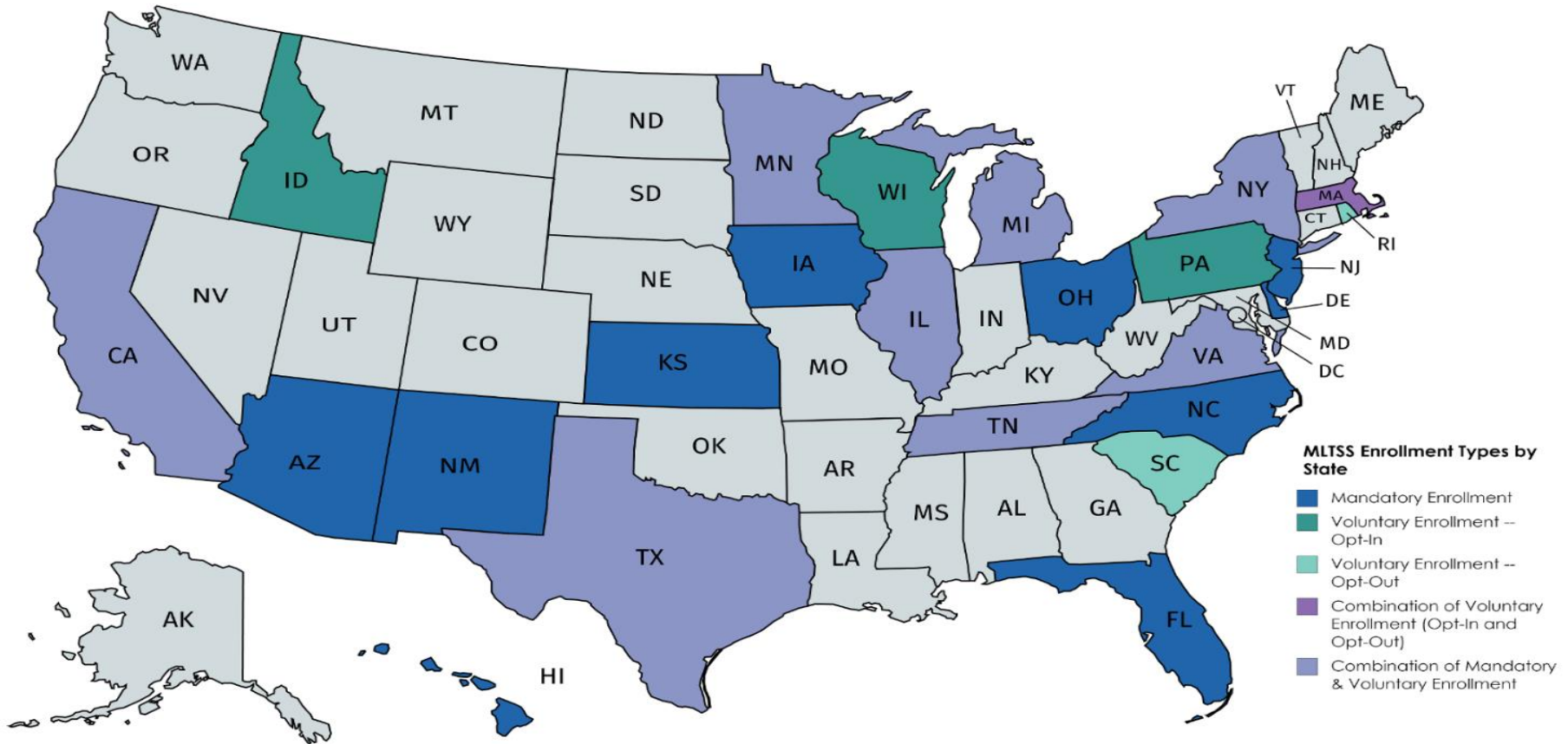
---

# Medicaid Managed LTSS Market Trends

# Managed Long-Term Services and Supports Programs, Aug 2018



# MLTSS Enrollment Types by State, 2017



Created with mapchart.net ©