

HHS/ASPE Webinar Series: Developing and Using a Learning Agenda Approach to Evidence-building

Webinar 4:

Cynthia Phillips and Rebecca Kruse (National Science Foundation [NSF])

Thursday, August 8, 2019

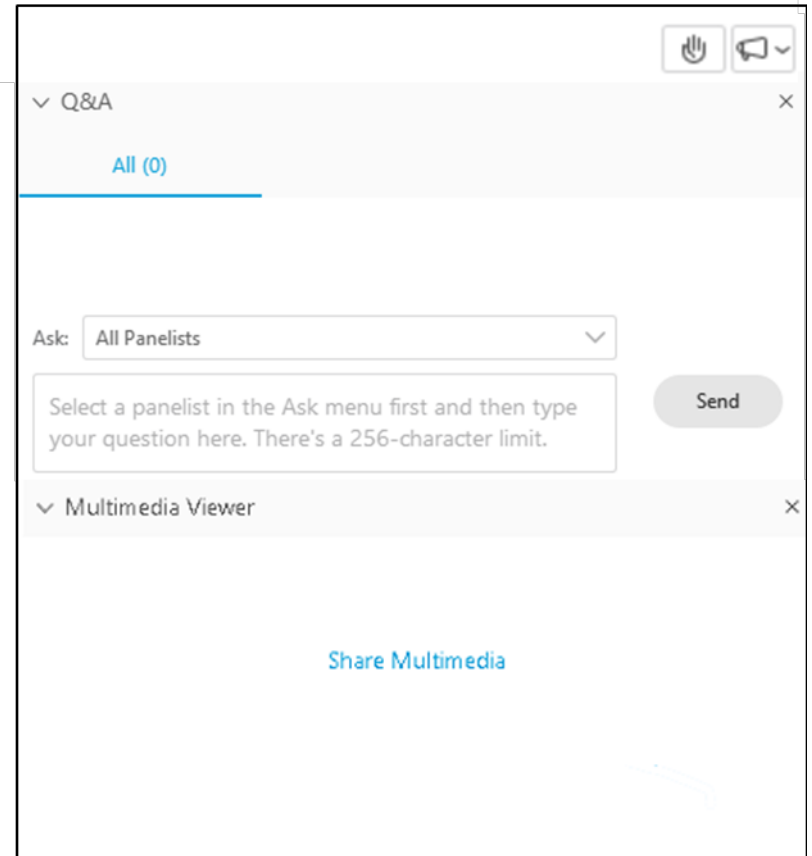
12:00 – 1:00 p.m. EDT



U.S. DEPARTMENT OF HEALTH AND HUMAN SERVICES
Office of the Assistant Secretary for Planning and Evaluation

Webinar Logistics

- Mute phone, unless speaking
- Q&A
- Hand raising
- Closed captioning (multimedia viewer)



Agenda

12:00–12:05	Welcome	Dr. Dan Finkelstein (Mathematica)
12:05–12:15	Recap of webinar series and events to date	Dr. Amanda Cash (ASPE)
12:15–12:45	Speaker presentation	Cynthia Phillips and Rebecca Kruse (NSF)
12:45–12:55	Q&A	All
12:55–1:00	Wrap-up	Dr. Dan Finkelstein



Meet the Speakers



Dr. Dan Finkelstein, Senior Researcher (Mathematica)

Dr. Daniel Finkelstein leads a variety of mixed-method evaluation studies and provide evaluation technical assistance to government agencies, foundations, and community-based non-profits with designing and implementing evaluation studies and plans. The majority of Dr. Finkelstein’s evaluation work is in the areas of public health, education, and health services.



Dr. Amanda Cash, Acting Director, Division of Data Policy (ASPE)

Dr. Cash’s portfolio includes research on evaluation methodologies appropriate for complex federal programs , and she co-leads the Federal Task Force for Combating Antibiotic Resistant Bacteria. Her office is coordinating implementation and leading implementation of Title I of the Evidence Act, which is focused on implementing Evidence-Building and Evaluation Plans. She is an epidemiologist by training, but now she works primarily on evaluation, evidence, and antimicrobial resistance.



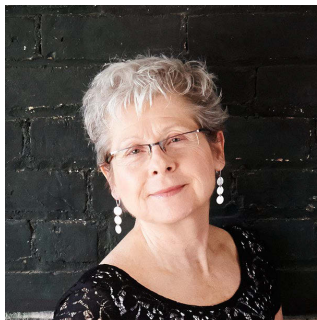
U.S. DEPARTMENT OF HEALTH AND HUMAN SERVICES
Office of the Assistant Secretary for Planning and Evaluation

Meet the Speakers – Con'd



Rebecca Kruse, Evaluator (NSF)

Rebecca leads the design, management, and use of analytic and evaluative studies to inform agency-wide programs, initiatives, and policies. As a visual practitioner, she deploys human-centered design, strategic facilitation, and other co-creation approaches to support interdisciplinary and cross-functional teams in translating evidence into actionable insights and ultimately into decisions. Rebecca is the principal design thinker driving the learning agenda work at NSF.



Cynthia Phillips, Acting Chief Evaluation Officer (NSF)

As the acting director for data policy, Cynthia strengthens the bridge that unites the evaluation, statistical, performance, and program arms of NSF. She is the author of the W.K. Kellogg Foundation's (2000) *Logic Model Development Guide* and co-author of *The Logic Model Guidebook: Better Strategies for Great Results* (2nd Ed., Sage, 2013).

Series' Objectives

- The Office of the Assistant Secretary for Planning and Evaluation (ASPE) is the policy think tank for the Secretary of the U.S. Department of Health and Human Services (HHS). Our office is leading implementation efforts for Title I of the Foundations for Evidence-Based Policymaking Act of 2018 (Evidence Act).
- The webinar series aims to:
 - Consider the array of strategies to create and implement evidence-building and evaluation plans as required by the Evidence Act
 - Support an ongoing, readily accessible resource for federal agency staff and others who may be implementing evaluation planning efforts
 - Support the creation of a summary report that will draw from the webinar series and other relevant literature



U.S. DEPARTMENT OF HEALTH AND HUMAN SERVICES
Office of the Assistant Secretary for Planning and Evaluation

Series' Recap

Webinar 1: July 18, 2019 – NIH, Drs. Marina Volkov and Ajay Vatave

Webinar 2: July 23, 2019 - USDA, FAS, Ellie Morefield

Webinar 3: July 30, 2019 – CNCS, Dr. Mary Hyde



U.S. DEPARTMENT OF HEALTH AND HUMAN SERVICES
Office of the Assistant Secretary for Planning and Evaluation

Polls: Baseline Data

- Learning interests
- Stage of implementation



U.S. DEPARTMENT OF HEALTH AND HUMAN SERVICES
Office of the Assistant Secretary for Planning and Evaluation

NSF

CYNTHIA PHILLIPS, ACTING CHIEF EVALUATION OFFICER
REBECCA KRUSE, EVALUATOR

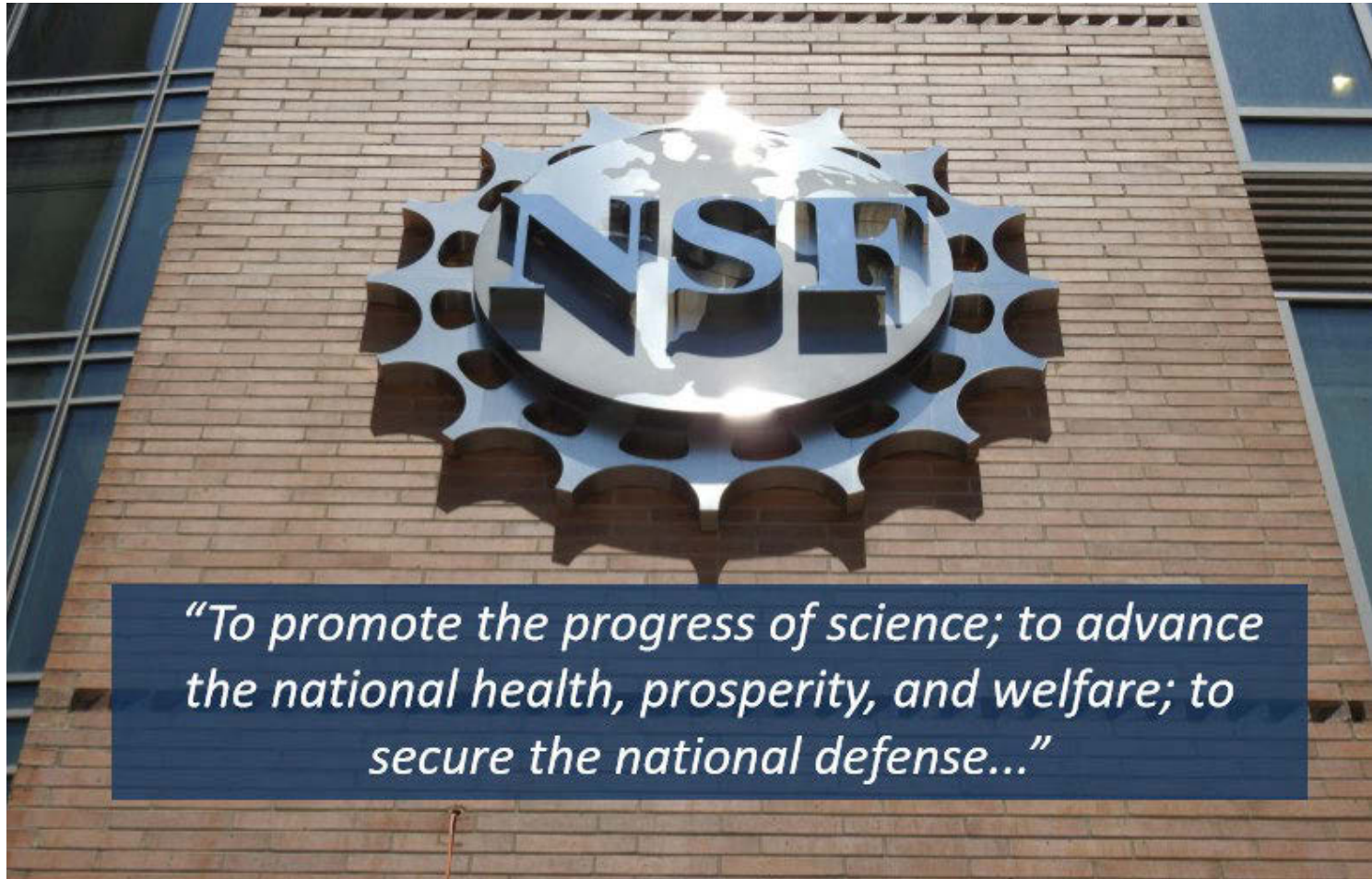
Poll

What is your primary role?

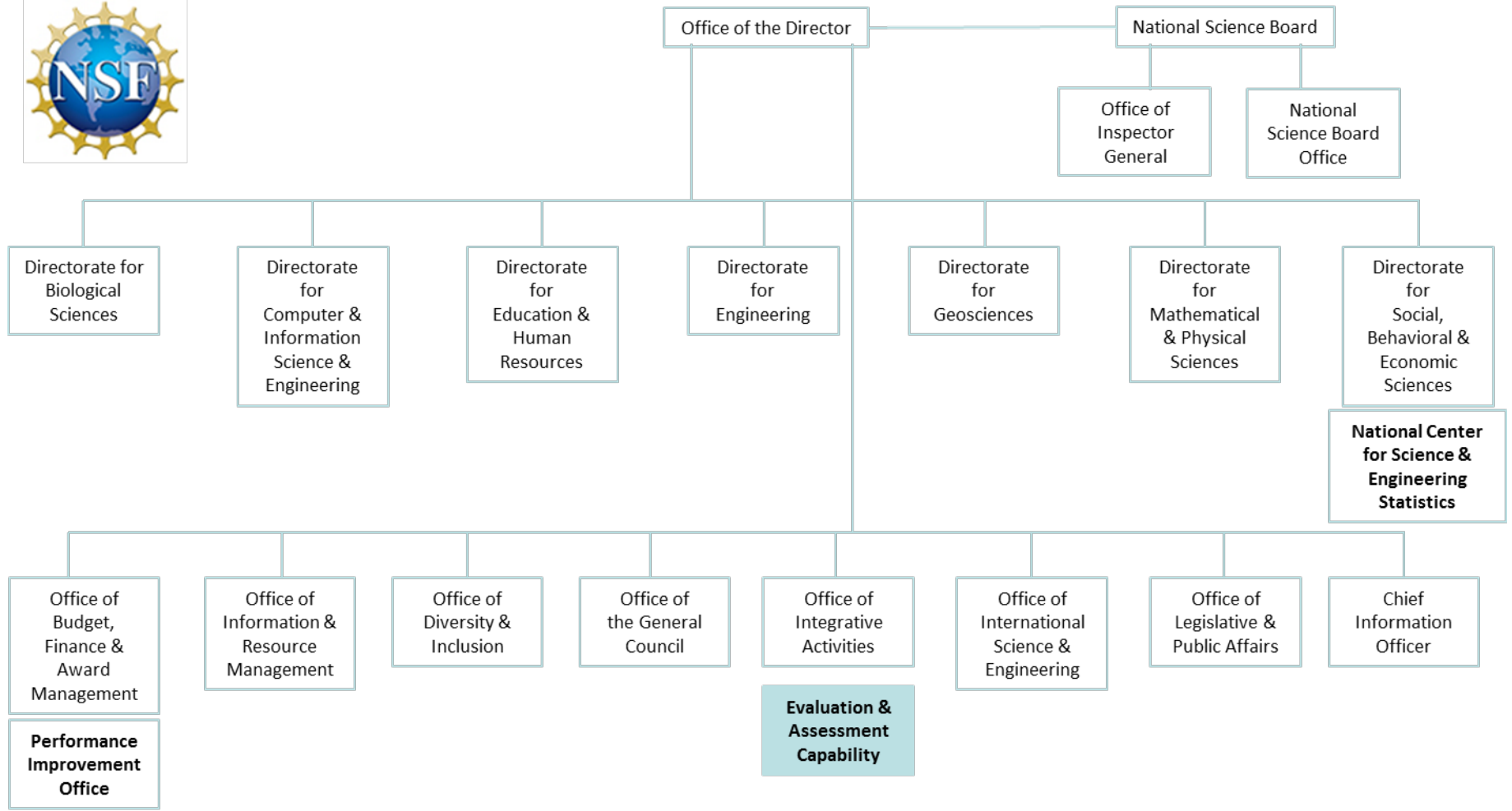
- A. Evidence consumer—I use evidence to make decisions
- B. Evidence producer—I build evidence for decision makers
- C. Evidence broker—I facilitate the flow of evidence between consumers and producers.



Agency Profile



Agency Profile



PRINCIPLES



It Is More Than Data

Planned collection, analysis, and synthesis of data and experience



**Informed
decisions &
actions**

Focus on Building and Use

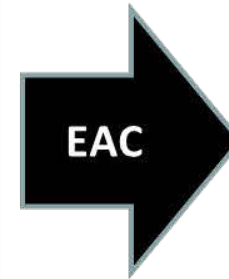
Planned collection, analysis, and synthesis of data and experience



Time and process devoted to development of insight

+

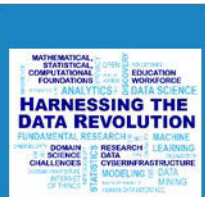
Willingness and ability to change



**Informed
decisions &
actions**

Select High Visibility, High Priority

RESEARCH IDEAS



Harnessing Data for 21st Century Science and Engineering

Work at the Human-Technology Frontier: Shaping the Future



Navigating the New Arctic

Windows on the Universe: Multi-messenger Astrophysics



Quantum Leap: Leading the Next Quantum Revolution

Understanding the Rules of Life: Predicting Phenotype



ENABLING IDEAS

Mid-scale Research Infrastructure



NSF 2026

THE NSF 2026 IDEA MACHINE



Growing Convergence Research at NSF



NSF INCLUDES: Enhancing STEM through Diversity and Inclusion

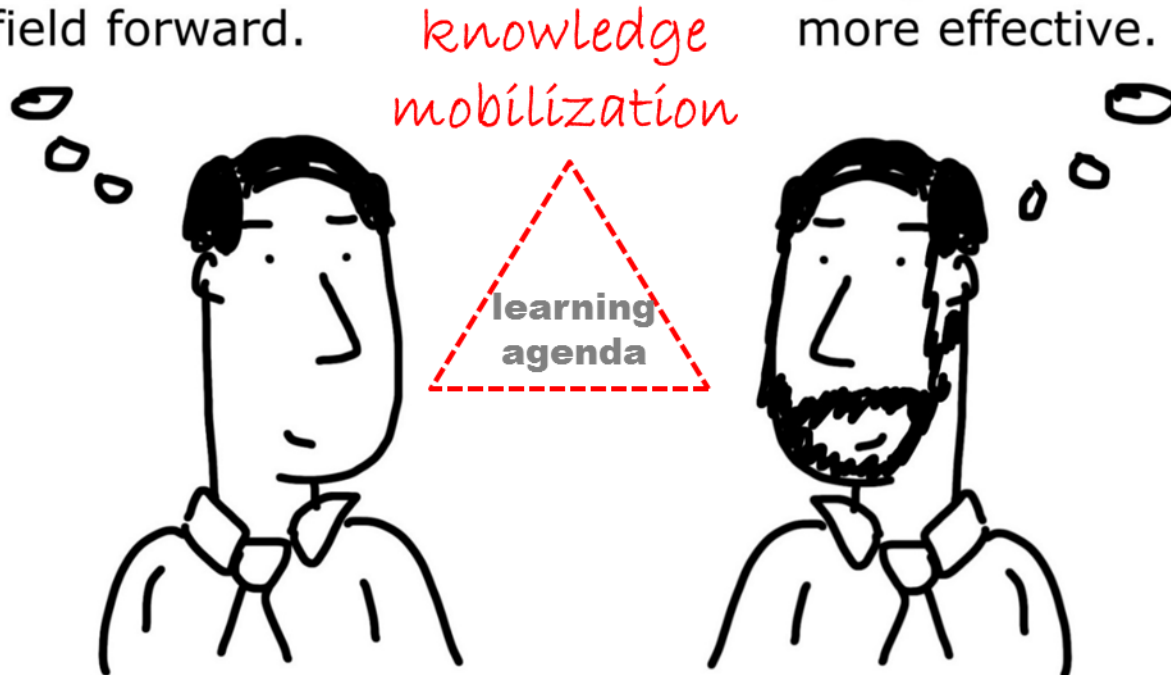
“ ... bold questions that will drive NSF's long-term research agenda -- questions that will ensure future generations continue to reap the benefits of fundamental S&E research. ”



Start Where You Are

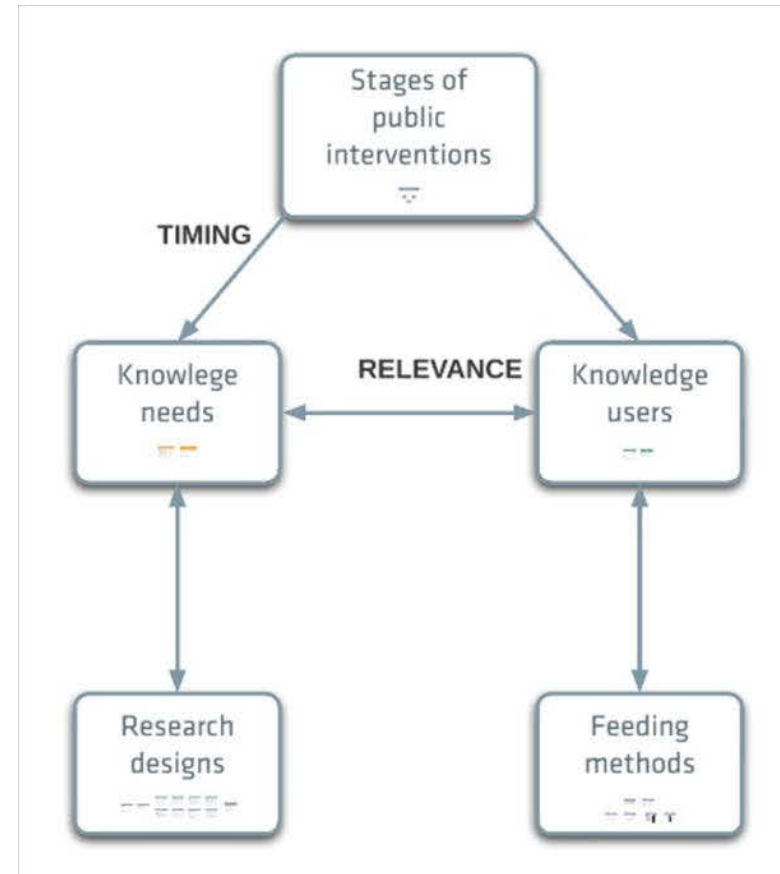
This **research** is really going to help move our field forward.

This **evaluation** is really going to help our program become more effective.



freshspectrum.com

Put People at the Center



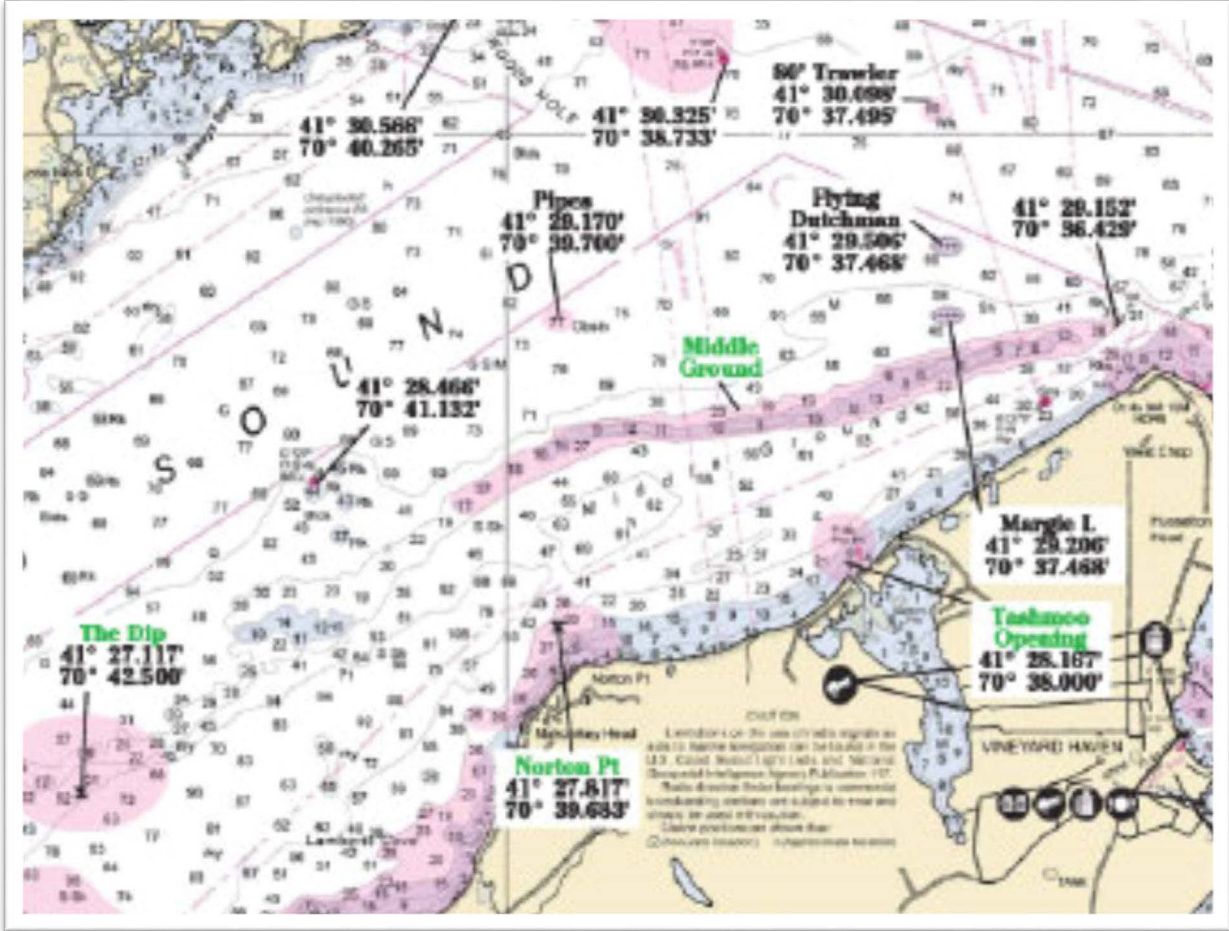
Poll

Which of our four principles most resonates with you?

- A. Focus on building and use
- B. Select high visibility, high priority
- C. Start where you are
- D. Put people at the center



IMPLEMENTATION



Stage of Implementation

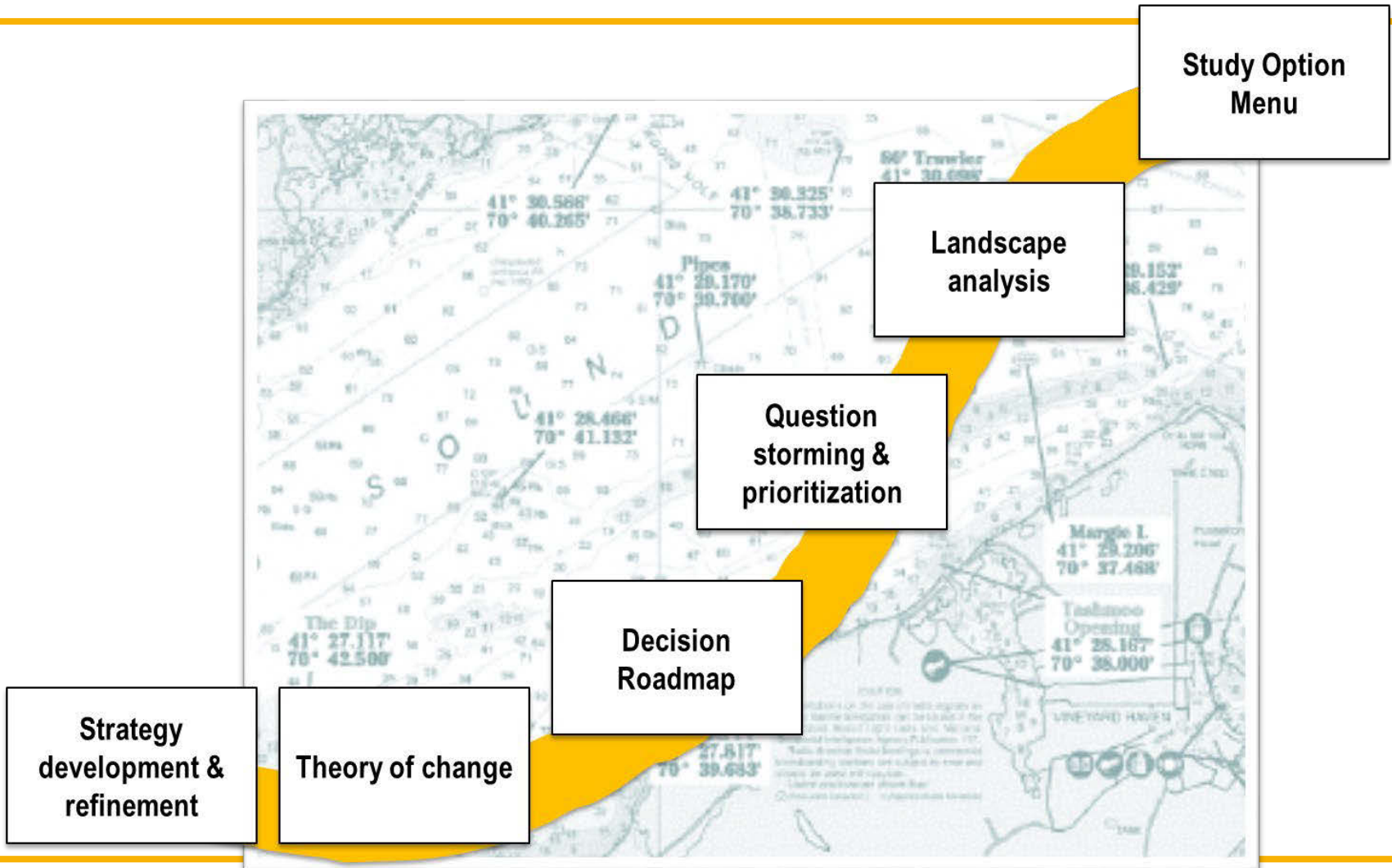


Agency-wide

Socializing Learning Agendas

- Learning agenda self-study groups
- Workshop with other federal agency champions
- Strategic Review
- Present to Senior Management
- Present to National Science Board
- Workshop with scientific R&D agencies

Processes and Structure



Barriers and Strategies

Barrier

Siloed agency and communities



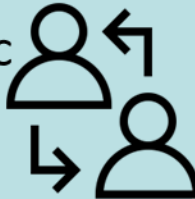
Strategy

Infrastructure for collaboration



Barrier

Limited, opportunistic stakeholder engagement



Strategy

Stakeholder engagement strategy and toolkit



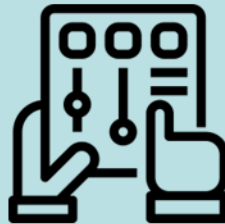
Barrier

Learning agenda for Science R&D

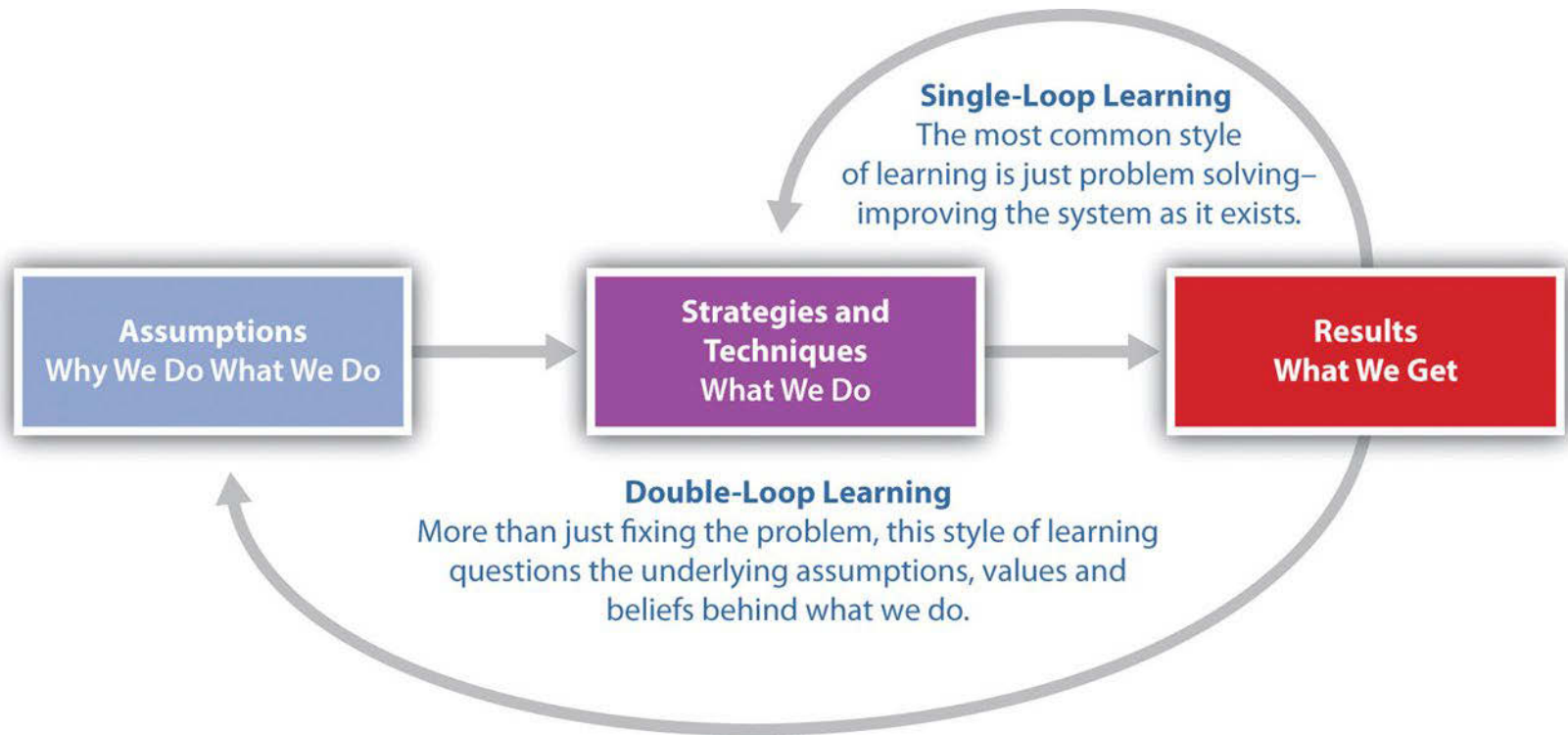


Strategy

Actionable questions about things we can control



Impact: Organizational Learning



“... it is not the data, per se, that add value, but their ability to tighten the feedback loop... that allows problem solvers to broadcast, receive, refine, and adapt solutions on an ongoing basis.” McGuinness & Slaughter, 2019

Lessons Learned

- Actionable questions yield action only if will and capacity exist for change
- Create a toolkit for stakeholder engagement across the learning agenda
- Demonstrate the value of learning to support improvement early on
- Learning agendas catalyzes appetite for more intentional use of evidence

Q&A

What questions do you have for Cynthia and Rebecca?



U.S. DEPARTMENT OF HEALTH AND HUMAN SERVICES
Office of the Assistant Secretary for Planning and Evaluation

Wrap-up

- Event materials- stay tuned!
- Registration links- Federal Evaluators' Listserve

Event	Date
Webinar 5: Brittany Borg (SBA)	Tues., August 13, 3:00 – 4:00 p.m. EDT
Webinar 6: Emily Schmitt (ACF)	Wed., August 28, 3:00 – 4:00 p.m. EDT
Webinar 8: Tammy Tippie (DoD, Navy)	TBA



Webinar Evaluation

- Quality
- Expectations (objectives)
- Content
- Actionability



U.S. DEPARTMENT OF HEALTH AND HUMAN SERVICES
Office of the Assistant Secretary for Planning and Evaluation

Thank You!

Please send feedback, comments, or questions to:

ASPE Evidence-Building Team

aspevidencebuilding@mathematica-mpr.com



U.S. DEPARTMENT OF HEALTH AND HUMAN SERVICES

Office of the Assistant Secretary for Planning and Evaluation