

Center for Studying Disability Policy

Vulnerable Populations in the Pandemic Labor Market

June 24, 2020

Welcome

Speakers



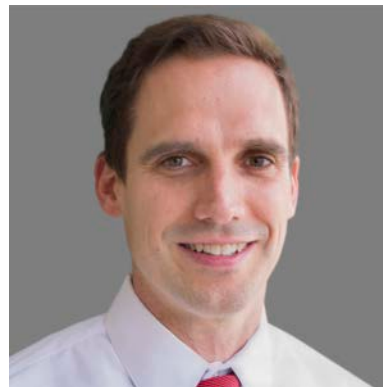
Purvi Sevak
Mathematica



Teresa Ghilarducci
The New School for
Social Research



Kelly Pavich
Bridges from
School to Work

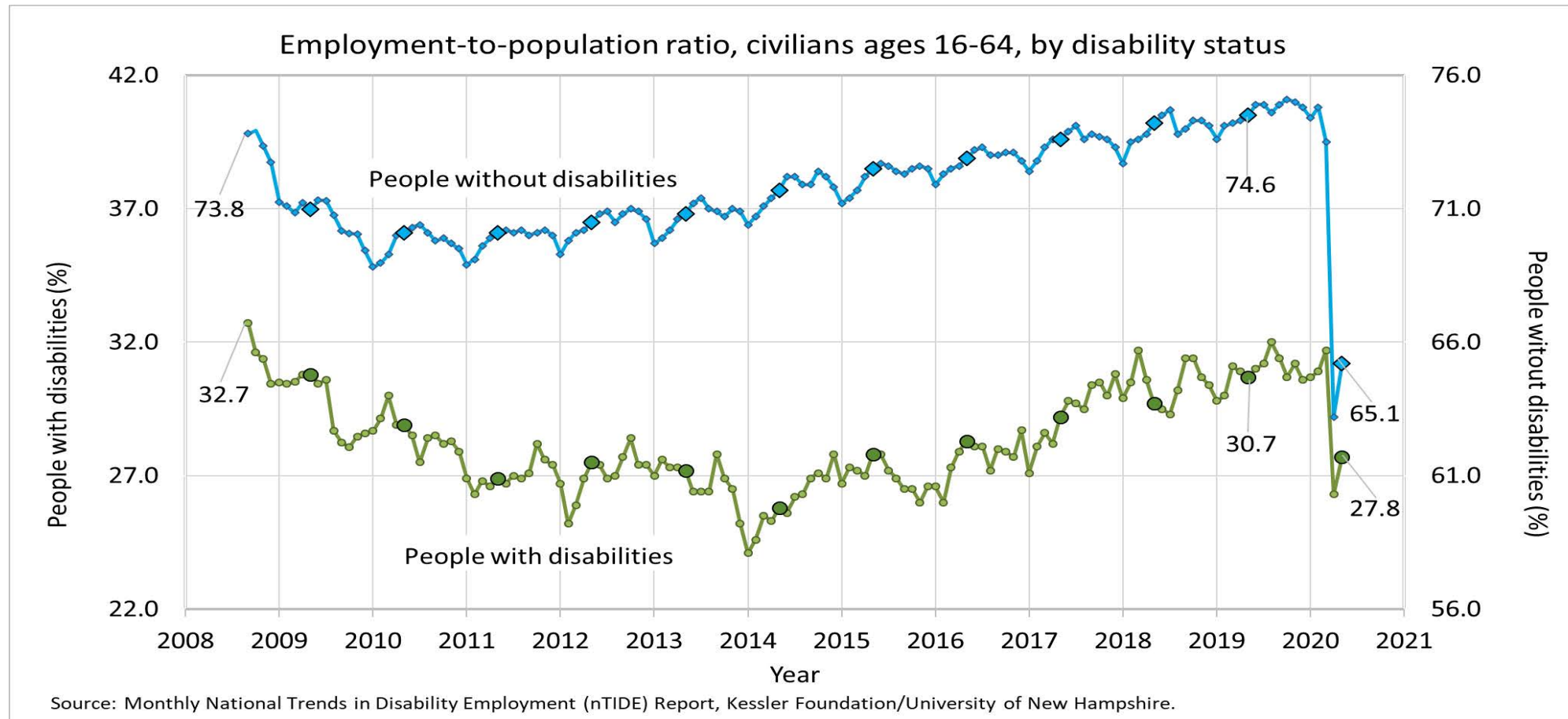


David Wittenburg
Mathematica

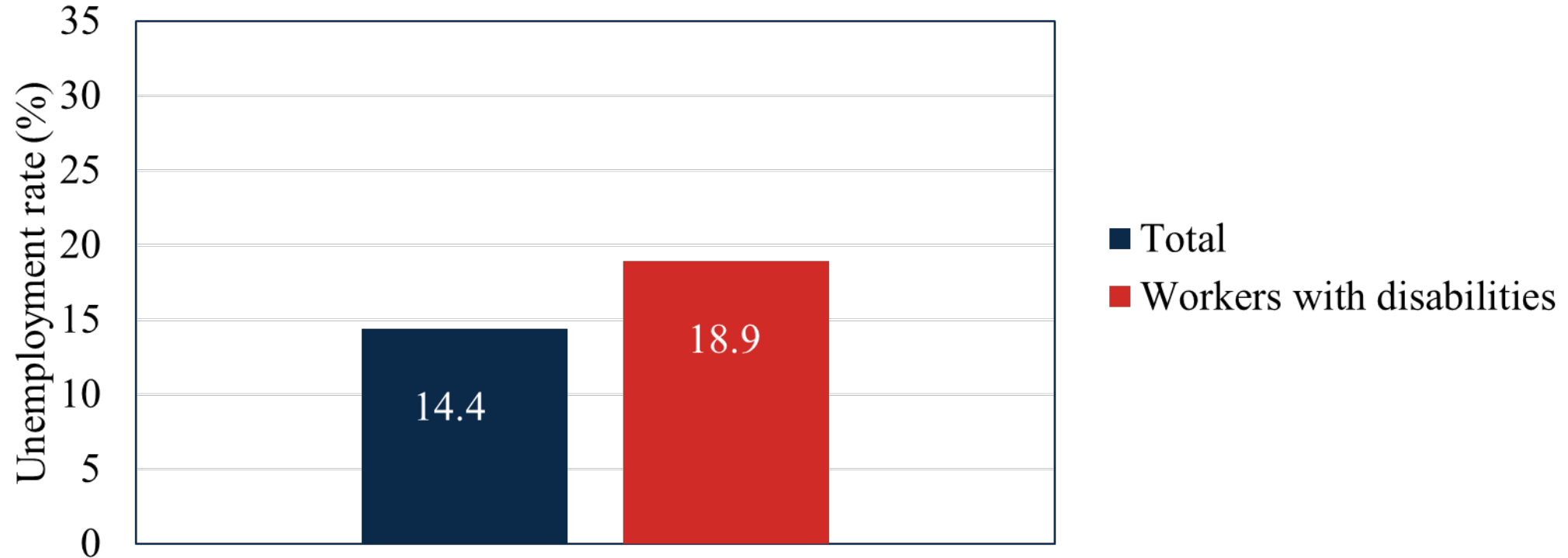
National statistics on some vulnerable groups

Purvi Sevak
Mathematica

Employment rate among people with and without disabilities



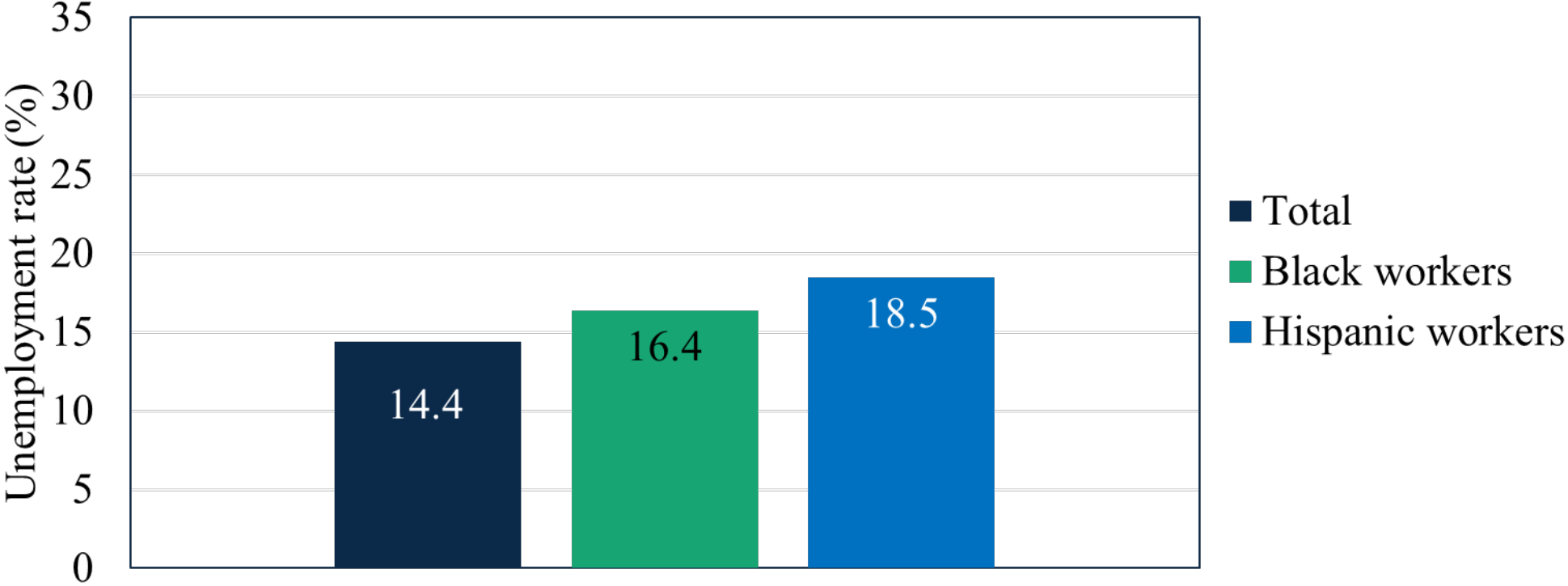
Unemployment rate higher among workers with disabilities



Note: April 2020 unemployment rates (not seasonally adjusted).

Source: Bureau of Labor Statistics.

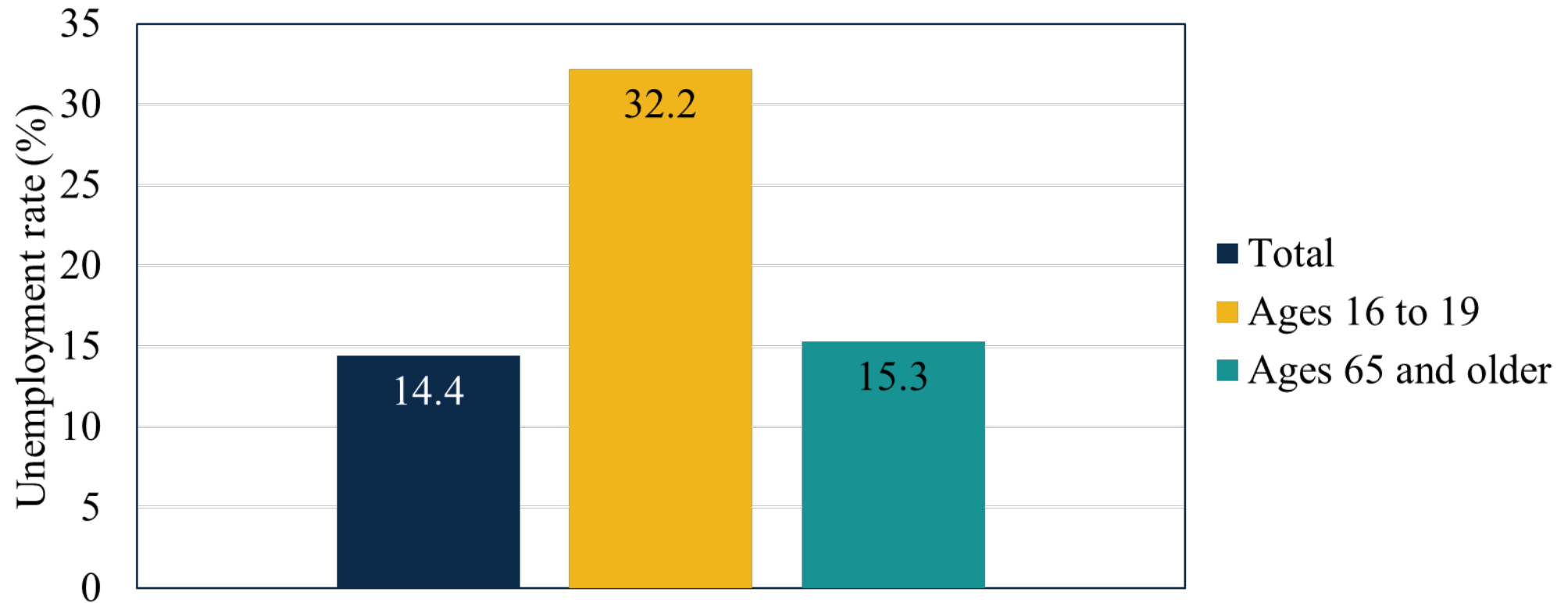
Unemployment rates higher among Black and Hispanic workers



Note: April 2020 unemployment rates (not seasonally adjusted).

Source: Bureau of Labor Statistics.

Unemployment rate highest among youth



Note: April 2020 unemployment rates (not seasonally adjusted).

Source: Bureau of Labor Statistics.

How COVID-19 Harshly Affects Older Workers

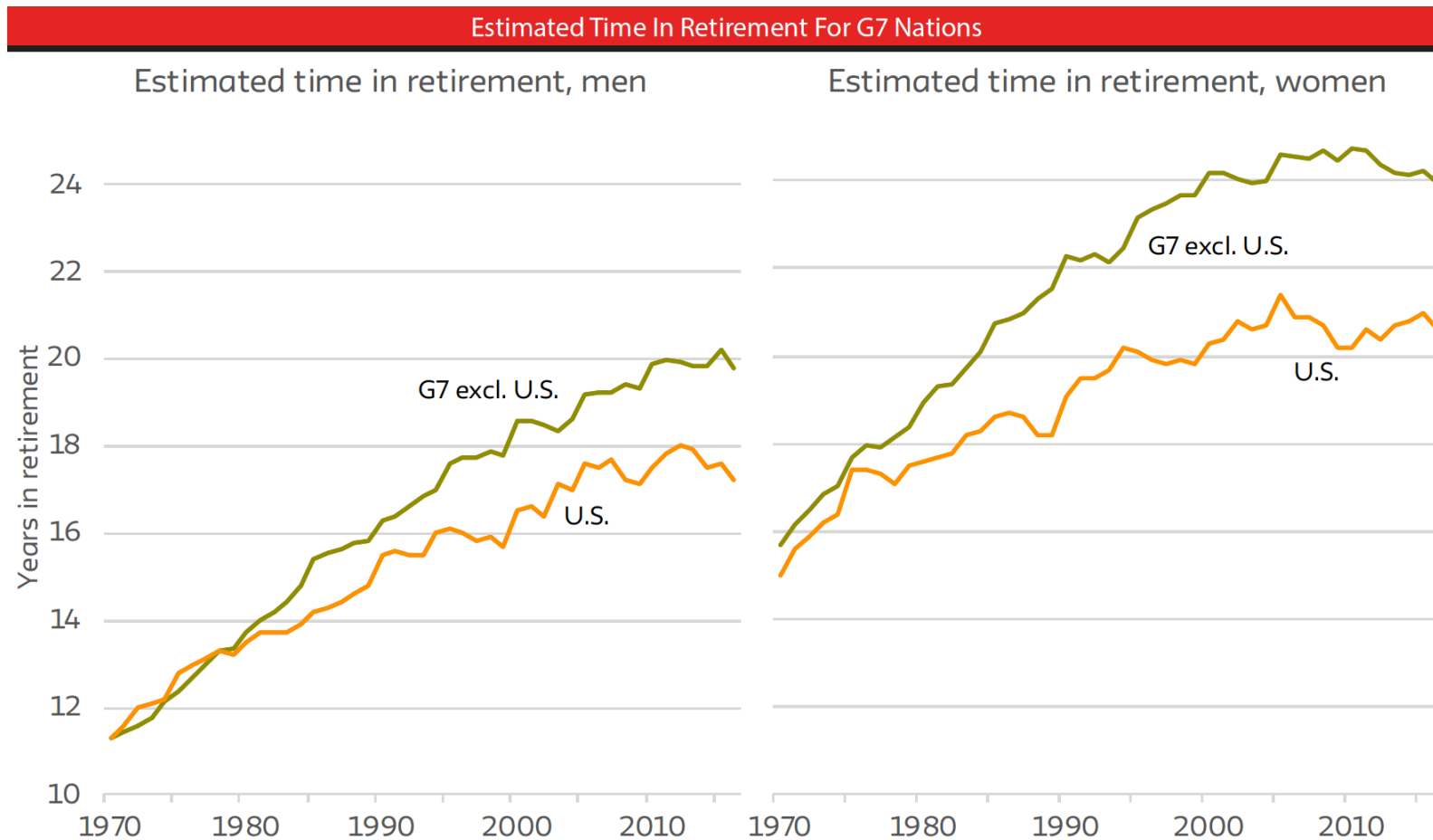
Teresa Ghilarducci

The New School

Schwarz Center for Economic Policy Analysis

Retirement Equity Lab

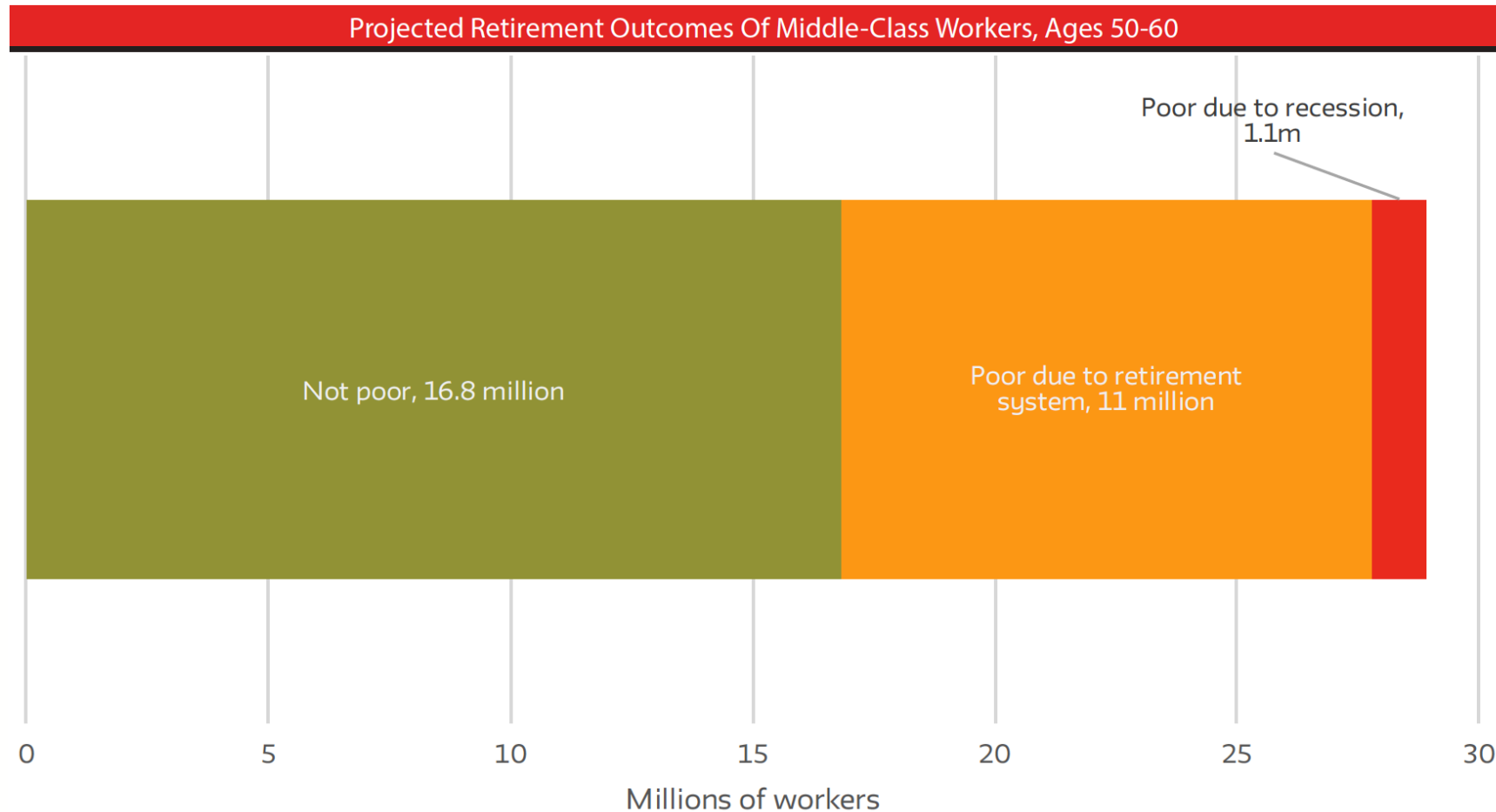
Even before the pandemic, Americans worked longer and died younger than elders in other advanced countries



Source: Organization for Economic Cooperation and Development

Note: The trend for G7 countries excluding the U.S. is calculated as a raw average of retirement times for Germany, France, U.K., Canada, Japan and Italy. The OECD estimates retirement time using life expectancy at pensionable age, which is defined as the age at which people can draw full benefits without reduction for early retirement.

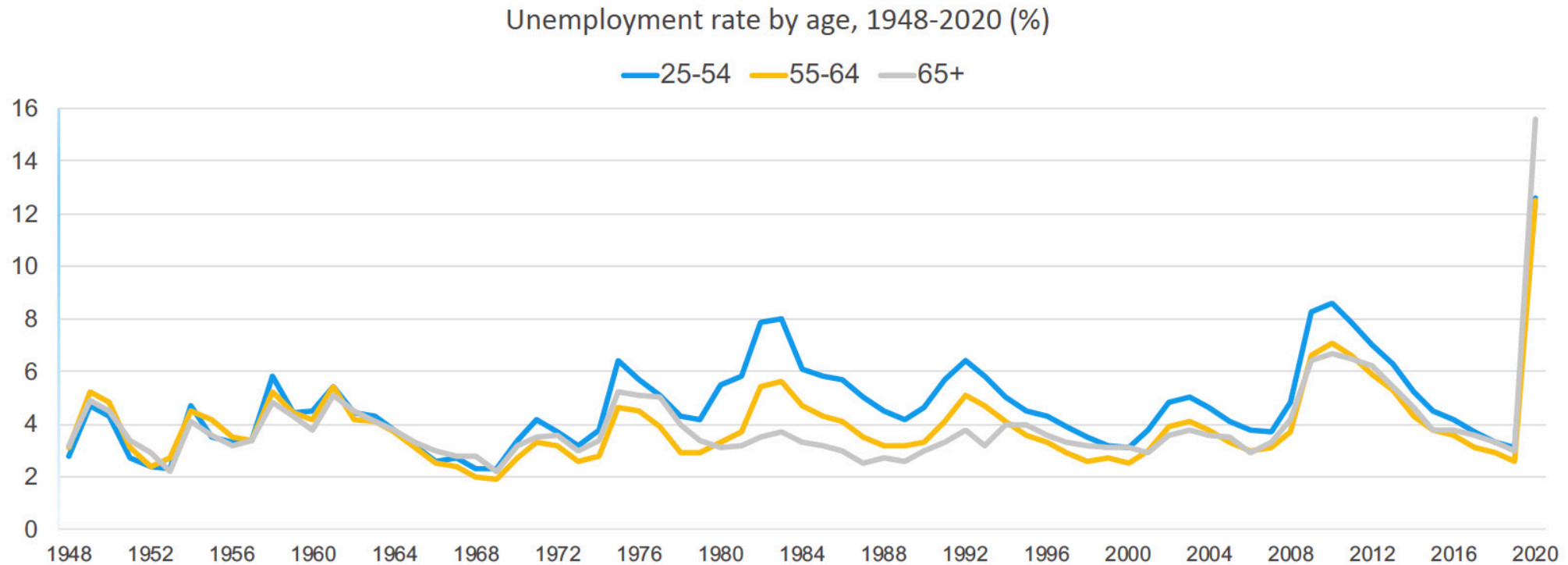
12 million of the 29 million middle-class older workers will be downwardly mobile in retirement



Source: Papadopoulos, M., Fisher, B., Ghilarducci, T., and Radpour, S. Retirement Equity Lab. (2020). "Recession Increases Downward Mobility in Retirement: Middle Earners Hit From Both Sides." Status of Older Workers Report Series. New York, NY. Schwartz Center for Economic Policy Analysis at The New School for Social Research.

Notes: Sample includes workers ages 44-54 in 2014 (ages 50-60 in 2020) and their spouses of any age. Poverty is defined as 200percent of the 2020 Federal Poverty Level. Middle class is defined as those in the top 50percent of the earnings distribution but below the Social Security income tax cutoff of \$137,700 a year.

During past recessions, including the Great Recession, older workers were LESS likely to become unemployed than younger workers

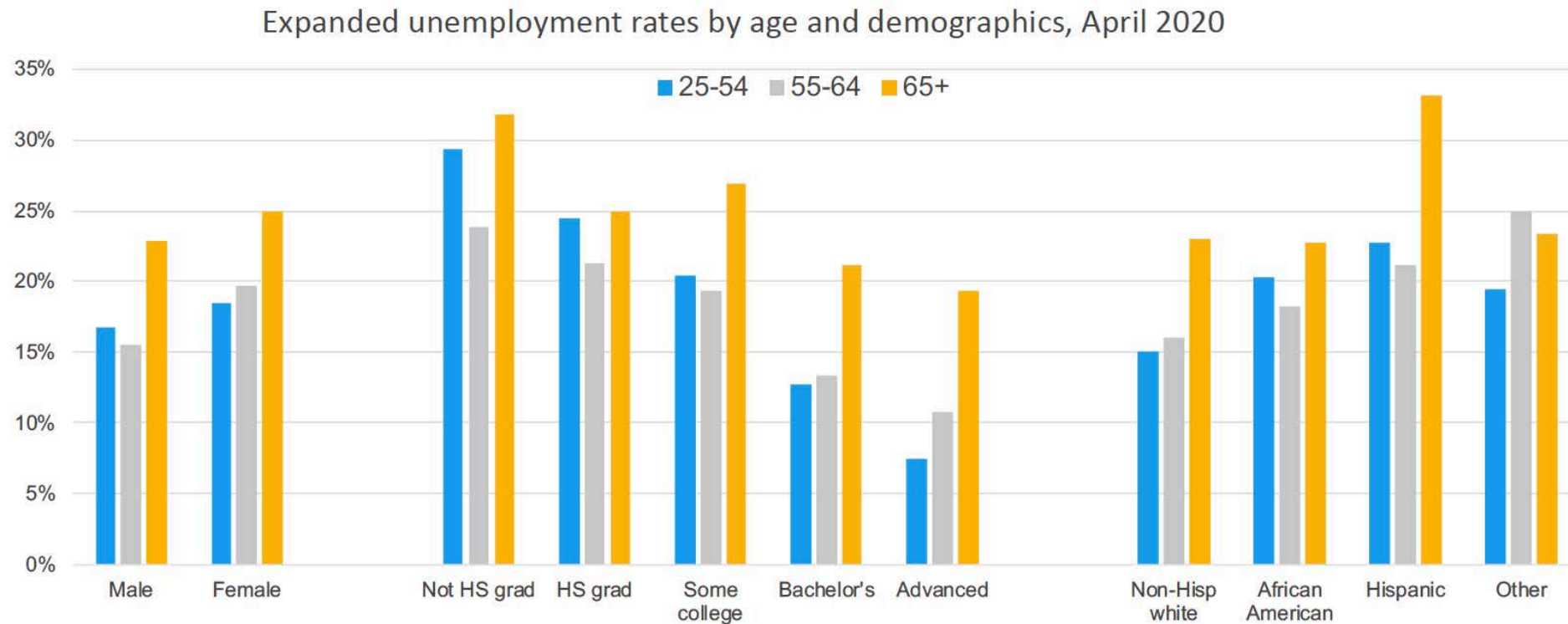


Source: Author's estimates from BLS data.

Note: The 2020 unemployment rate is for April only. Other rates are annual averages

Source: Johnson, R. "Older Workers and COVID-19: The Harsh Economic Realities."

That has changed during this pandemic for nearly all demographic groups of middle-aged and older workers.



Source: Author's calculations from Current Population Survey data.

Note: Expanded unemployment rate includes workers who report not being at work for "other" reasons.

Source: Johnson, R. "Older Workers and COVID-19: The Harsh Economic Realities."

Evidence from one promising program

Kelly Pavich
Bridges from School to Work

Bridges from School to Work:

*Transforming lives
through the power of
a job*



Assist special education individuals ages 17 to 24
find integrated, competitive employment

- 12 urban areas, mostly Title I schools

Provide one-on-one support to participants as
they transition to adulthood

- Job readiness training

- Assistance with job development and employment

- Up to a year of post-hire date support

In a typical program year:

- About 1,000 participants

- 88% placement rate

- 80% working at 90 days

COVID-19 and employment of Bridges participants

- Enrolled: 742 youth in program year 2020
 - 717 (97%) still engaged
- Hired: 569 (77%) in employment
 - 195 (34%) still working
 - 154 (27%) seeking work
- Participants affected by COVID-19:
 - Family members ill or died
 - Furloughed, or members of their families were furloughed or laid off





How is Bridges keeping 97% of participants engaged?

- Support from staff to complete remote learning in school year
- Virtual employability skills instruction
 - 1,000+ registered for summer course in New York City
- Partnered with Accenture to offer *Skills to Succeed (S2S) and a Boot Camp event*
 - 141 online career courses
 - 6 weekly events via Zoom



Questions?

For more information:

Purvi Sevak

psevak@mathematica-mpr.com

Teresa Ghilarducci

ghilardt@newschool.edu

Kelly Pavich

kelly.pavich@bridgestowork.org



Thank you!