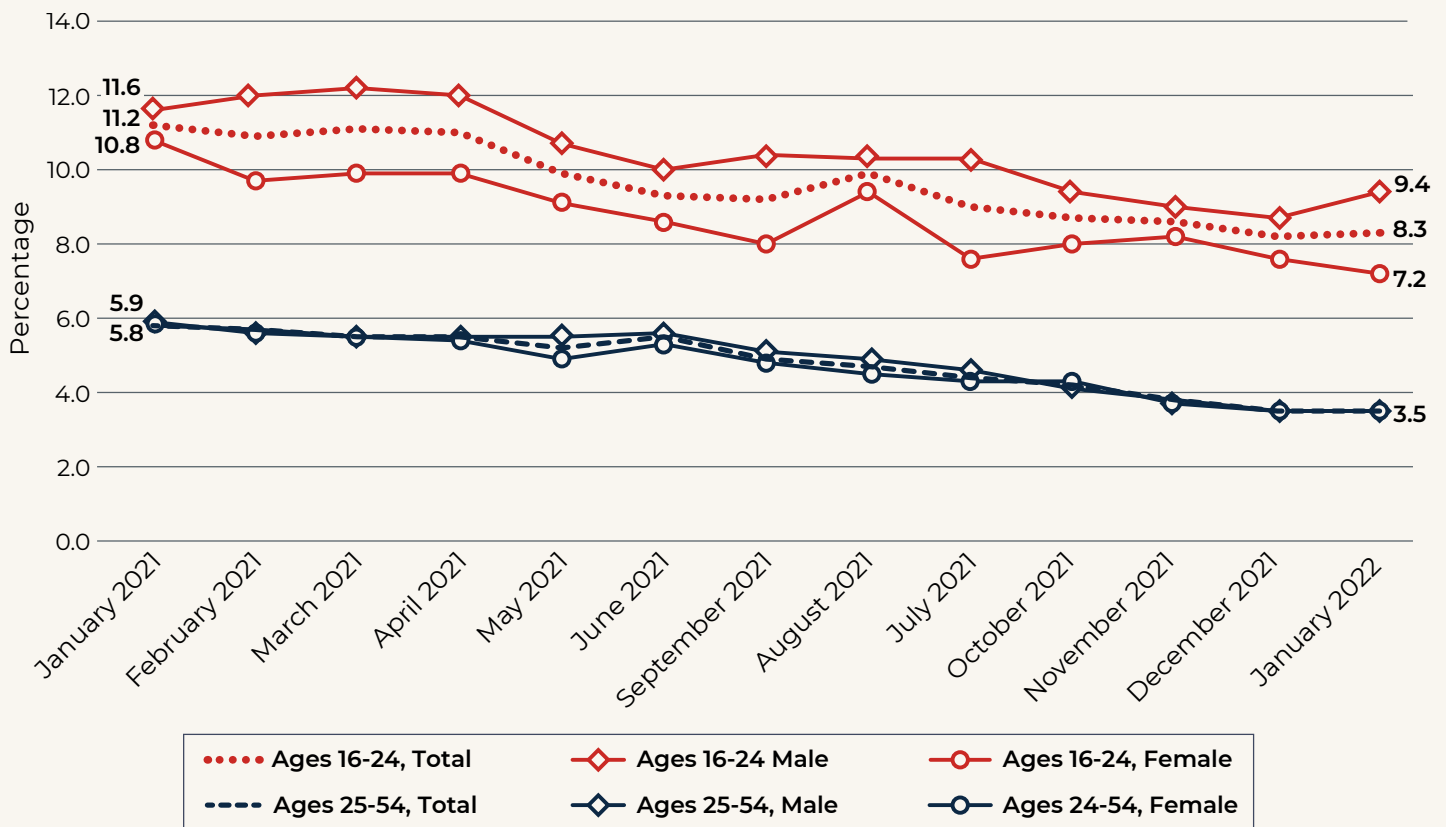


Monthly Unemployment Rates by Gender and Age, January 2021–January 2022


The U.S. economy started 2022 with a strong jobs report. Employers added 467,000 jobs ([BLS 2022](#)). The unemployment rate among prime-age workers (those ages 24 to 54) remained at 3.5 percent for both male and female workers, declining from 5.9 percent for men and 5.8 percent for women at the same time a year ago.

Among youth (those ages 16 to 24), the unemployment rate in January 2022 was 8.3 percent, increasing 0.1 percentage points from the previous month. However, when broken down by gender, the unemployment rate increased by 0.7 percentage points to 9.4 percent for male youth, whereas it decreased by 0.4 percentage points to 7.2 percent for female youth.

Looking at the yearlong trends in unemployment rates by age and gender, rates trended downward for all groups. However, rates among youth fluctuated considerably compared to those for workers ages 24 to 54. This reflected the seasonality of youth's participation in the labor force, with many youth searching for shorter-term employment, particularly in the summer.



Source: Mathematica compilation based on the Bureau of Labor Statistics' monthly Labor Force Statistics from the Current Population Survey (<https://www.bls.gov/cps/data.htm>).

 [Explore the interactive dataviz](#)

 [Download the data](#)

Note: Estimates account for seasonal patterns.