

HHS/ASPE Webinar Series: Developing and Using a Learning Agenda Approach to Evidence-Building

Webinar 3:

Dr. Mary Hyde, Corporation for National and Community Service (CNCS)

Tuesday, July 30, 2019

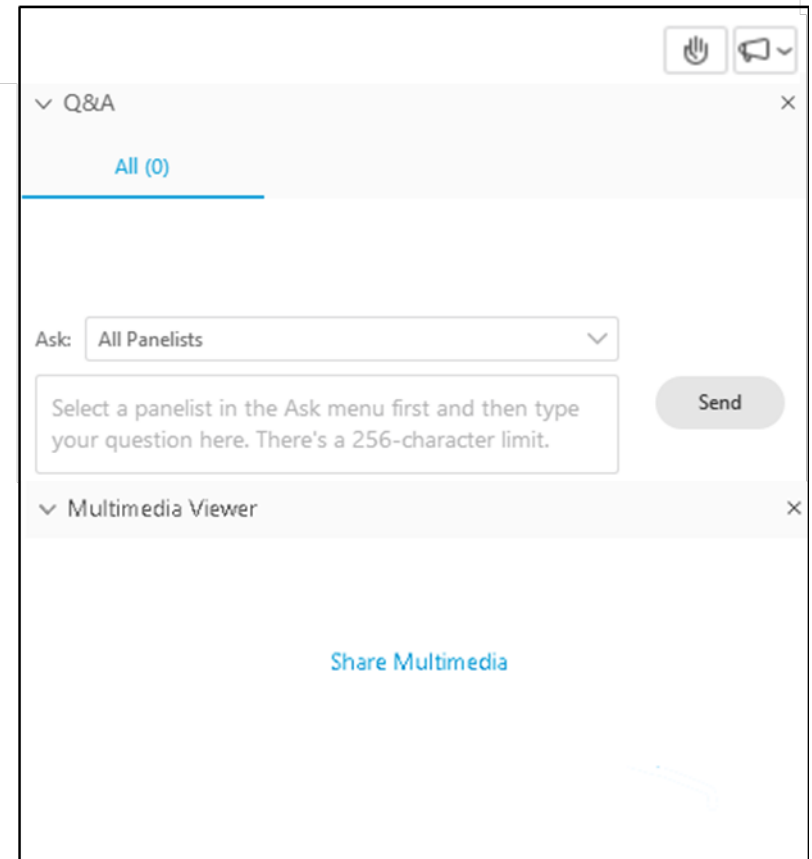
3:00–4:00 p.m. EDT



U.S. DEPARTMENT OF HEALTH AND HUMAN SERVICES
Office of the Assistant Secretary for Planning and Evaluation

Webinar Logistics

- Mute phone, unless speaking
- Q and A
- Hand raising
- Closed-captioning (multimedia viewer)



Agenda

3:00–3:05	Welcome	Jessica McNab (Mathematica)
3:05–3:15	Recap of webinar series and events to date	Amanda Cash (ASPE)
3:15–3:45	Speaker presentation	Mary Hyde (CNCS)
3:45–3:55	Q and A	All
3:55–4:00	Wrap-up	Jessica McNab



Meet the Speakers



Jessica McNab, researcher and task lead (Mathematica)

Jessica leads curriculum development and facilitates shared learning for technical assistance projects focused on quality improvement and delivery system reform. In previous roles, she led a team of improvement specialists at a managed care hospital system and directed technical assistance focused on rapid cycle improvement in hospitals.



Amanda Cash, acting director, Division of Data Policy (ASPE)

Dr. Cash's portfolio includes research on evaluation methodologies that are appropriate for complex federal programs. She co-leads the federal Task Force for Combating Antibiotic-Resistant Bacteria. Her office is coordinating and leading implementation of Title I of the Evidence Act, which is focused on implementing evidence-building and evaluation plans. An epidemiologist by training, Dr. Cash now works primarily on evaluation, evidence, and antimicrobial resistance.



U.S. DEPARTMENT OF HEALTH AND HUMAN SERVICES
Office of the Assistant Secretary for Planning and Evaluation

Meet the Speakers – Con'd



Dr. Mary Hyde, director, Office of Research and Evaluation (CNCS)

Dr. Hyde is responsible for overseeing the agency's evaluation activities, learning agenda, and capacity assessment, as well as collaborating with, shaping, and contributing to other evidence-building functions within the agency.

Series Objectives

- The Office of the Assistant Secretary for Planning and Evaluation (ASPE) is the policy think tank for the secretary of the U.S. Department of Health and Human Services (HHS). Our office is leading the implementation efforts for Title I of the Foundations for Evidence-Based Policymaking Act of 2018 (Evidence Act).
- The webinar series aims to do the following:
 - Consider the array of strategies to create and implement evidence-building and evaluation plans as required by the Evidence Act.
 - Support an ongoing, readily accessible resource for federal agency staff and others who may be implementing evaluation planning efforts.
 - Support the creation of a summary report that will draw from the webinar series and other relevant literature.



Series Recap

Webinar 1: July 18, 2019 - NIH, Drs. Marina Volkov and Ajay Vatave

Webinar 2: July 23, 2019 - USDA, FAS, Ellie Morefield



U.S. DEPARTMENT OF HEALTH AND HUMAN SERVICES
Office of the Assistant Secretary for Planning and Evaluation

Polls: Baseline Data

- Learning interests
- Stage of implementation



U.S. DEPARTMENT OF HEALTH AND HUMAN SERVICES
Office of the Assistant Secretary for Planning and Evaluation

CNCS

DR. MARY HYDE, DIRECTOR, OFFICE OF RESEARCH AND EVALUATION

Our mission is to improve lives, strengthen communities, and foster civic engagement through service and volunteering.

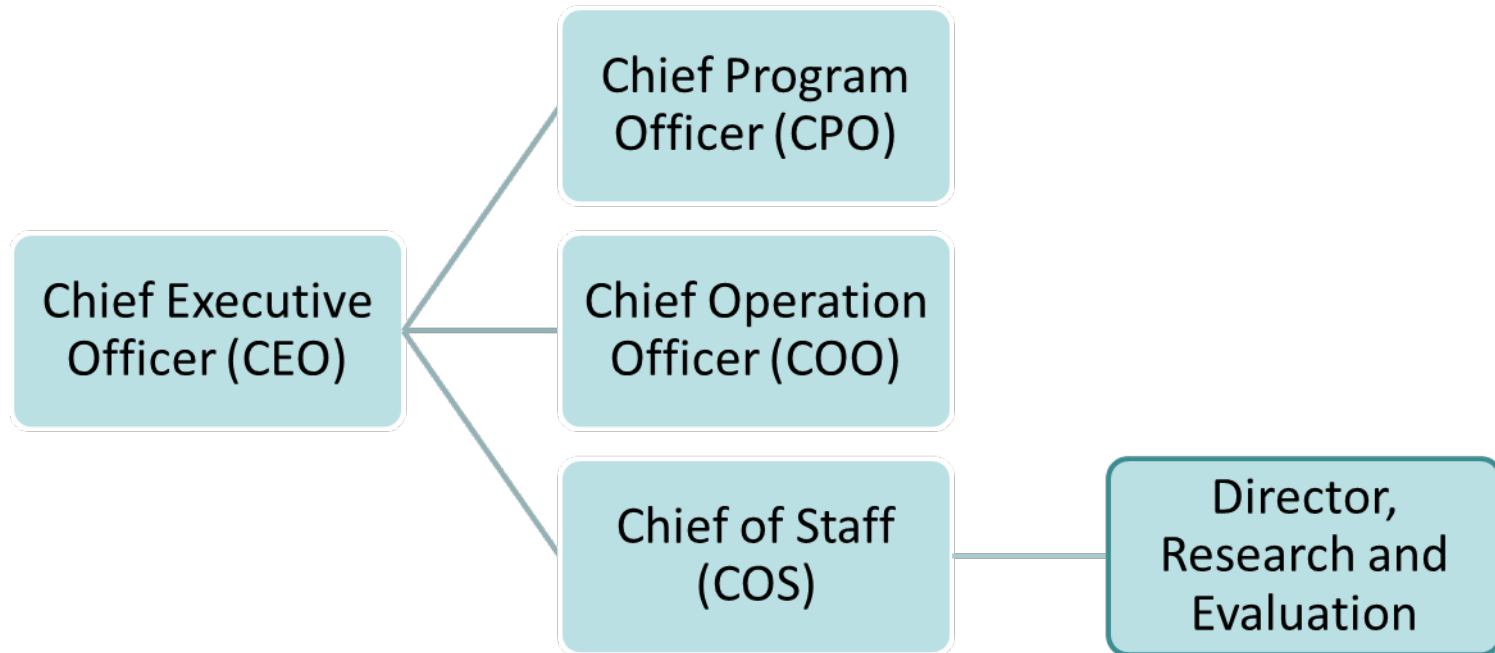


Corporation for
**NATIONAL &
COMMUNITY
SERVICE** ★★ ★



Agency Profile

- Established in 1993, the Corporation for National and Community Service (CNCS) is a federal agency that engages millions of Americans in service through its core programs -- AmeriCorps and Senior Corps -- and national volunteer efforts.



Approach

- Catalyst for relationship building and critical conversations
 - Shared understanding/common language
 - Priority setting
 - Available resources/needed resources

- Creating a culture of learning
 - Role of evidence in a learning organization
 - Documenting the agency's evidence-building journey/shared history
 - Establishing shared values for the role evidence can play in achieving the agency's mission

Processes and Structure

- Transitioning from the informal to the formal
 - Hide and seek
 - Briefing the CEO
- Relationship to strategic planning and budget formulation processes
 - What meeting is this again?
- Collective learning
 - Stop. Drop. Reflect.
 - So what?
 - Now what?

Stage of Implementation



- Draft Evidence Plan in circulation internally
- Several meetings with Program Offices, COS, and CEO have occurred
- Plan expected to be finalized internally by end of FY19

Barriers and Strategies

Barrier

Jargon

Strategy

Plain language/reciprocity

Barrier

Fear

Strategy

Safe environment

Barrier

Nice to have

Strategy

Can't afford not to have

Expected Impact

- Making progress
 - Draft document in circulation
- Shifting the conversation
 - Surfacing assumptions
 - Raising questions
 - Emerging priorities
 - Informing programming and funding discussions
- Innovation, improvement, and impact
 - Role of research in developing new solutions
 - Roadmap for refinements
 - Robust body of evidence for what works

Lessons Learned

- Evidence building is relationship building
 - Bring your best cross-cultural competencies to the table
 - Counseling may be required
 - Change management skills are handy to have
- (<https://eblingroup.com/blog/three-reasons-your-change-initiative-will-fail/>)



Q&A

What questions do you have for Dr. Hyde?



U.S. DEPARTMENT OF HEALTH AND HUMAN SERVICES
Office of the Assistant Secretary for Planning and Evaluation

Wrap-Up

- Event materials: Stay tuned!
- Registration links: Federal Evaluators' Listserve

Event	Date
Webinar 4: Cynthia Phillips, Rebecca Kruse (NSF)	Thurs., August 8, Noon–1:00 p.m. EDT
Webinar 5: Brittany Borg (SBA)	Tues., August 13, 3:00–4:00 p.m. EDT
Webinar 6: Emily Schmitt (ACF)	Wed., August 28, 3:00–4:00 p.m. EDT
Webinar 7: Tammy Tippie (DoD, Navy)	TBA



Webinar Evaluation

- Quality
- Expectations (objectives)
- Content
- Actionability



U.S. DEPARTMENT OF HEALTH AND HUMAN SERVICES
Office of the Assistant Secretary for Planning and Evaluation

Thank You!

Please send feedback, comments, or questions to the following address:

ASPE Evidence-Building Team

aspevidencebuilding@mathematica-mpr.com



U.S. DEPARTMENT OF HEALTH AND HUMAN SERVICES
Office of the Assistant Secretary for Planning and Evaluation